

# OVERSIZE/OVERWEIGHT PERMITS

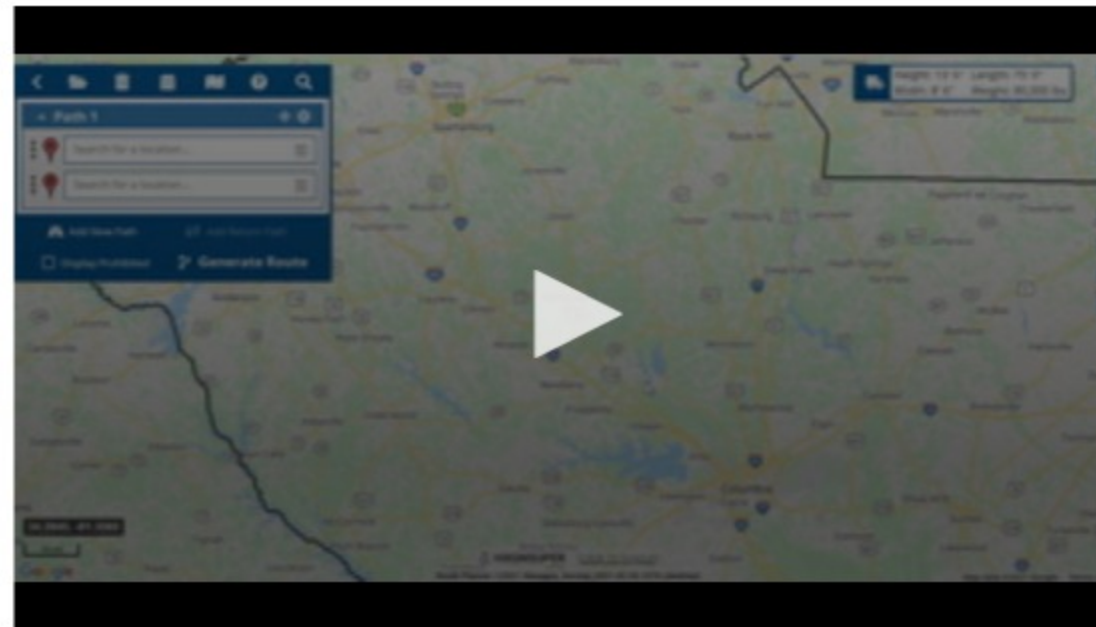
## What is an Oversize Overweight Permit?

State law authorizes the SCDOT Oversize/Overweight Permit (OSOW) office, at its discretion, to issue permits for vehicles and loads that exceed legal size and/or weight limits.

### Permitting System Upgraded to Safehaul

The OSOW permitting has been upgraded to a newer version of the software. We've posted instructional video on this page to demonstrate how to build and generate a route in the new system. We hope you find the new features useful.

### Safehaul Instructional Video



[Instructional Video Transcript](#)

### Obtain a Permit



[Apply for Permit](#)

[Fee Schedule](#)

[Size and Weight Guidelines](#)



[Contact Information](#)



### Related Links

[SC Current Road Conditions](#)

[SCDOT Bridge Load Restrictions](#)

[SC Code of Law Title 56 Article 33](#)

[FHWA Truck Size and Weight](#)

[Boat Transporters Call before you Haul](#)