

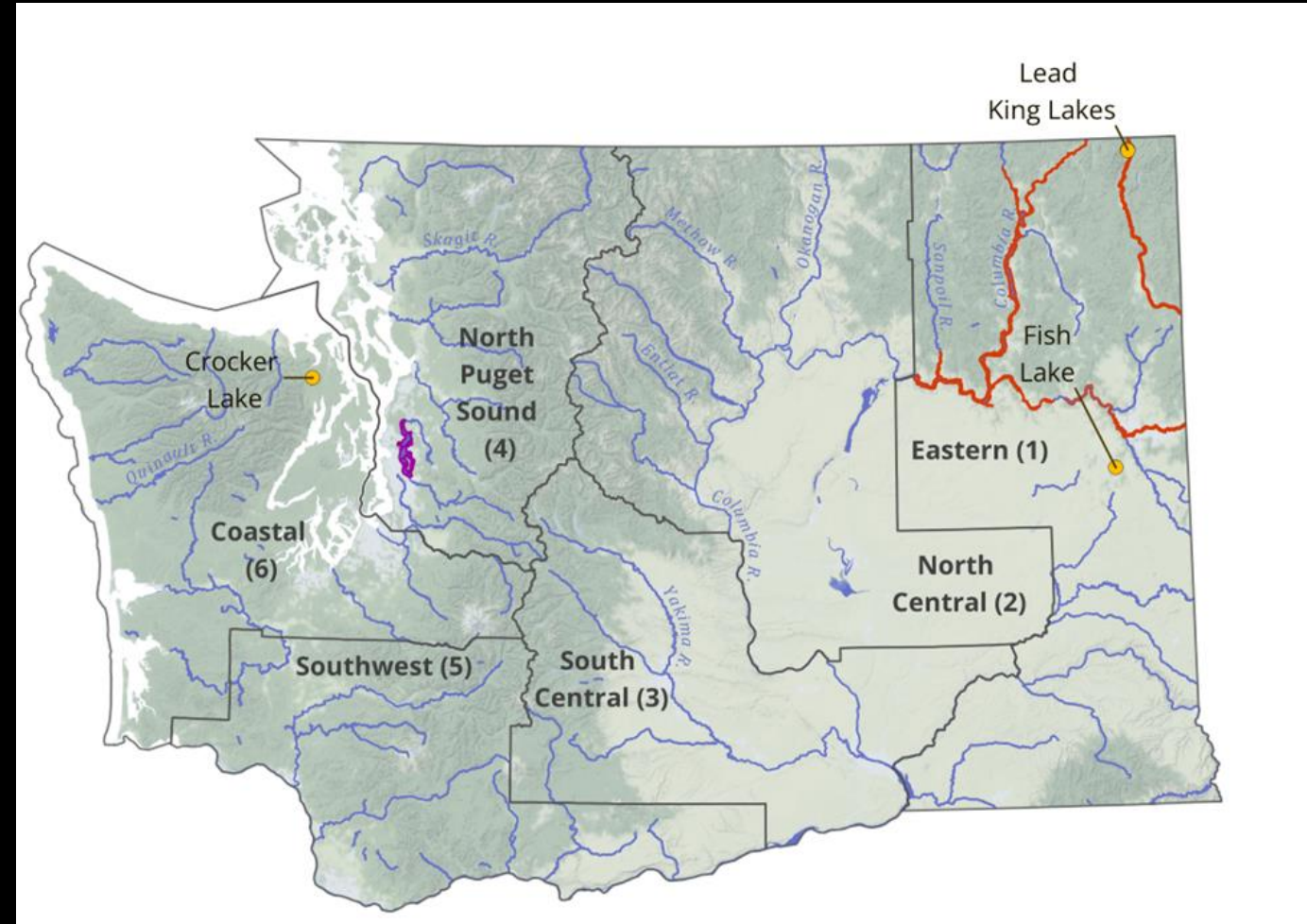
Northern Pike Management in Washington State



Washington Department of Fish and Wildlife: Charles Lee and Tyler Parsons

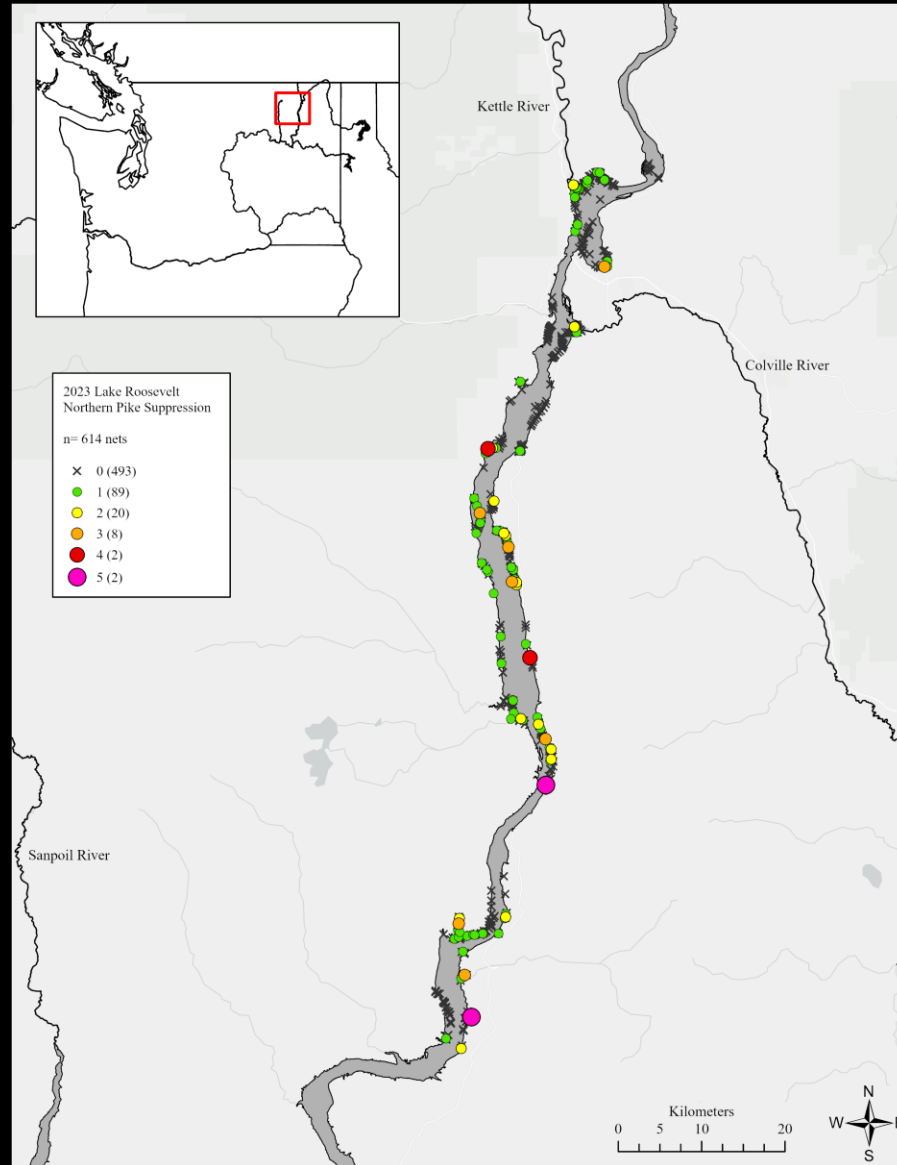
Current Suppression and Monitoring

- Box Canyon Reservoir (Pend Oreille River)
 - Kalispell Tribe, WDFW
 - Monitoring (SPIN) 2010-Present
 - Suppression 2012-Present
- Boundary Reservoir (Pend Oreille River)
 - Kalispell Tribe, WDFW
 - Monitoring and Suppression 2016-Present
- Lake Roosevelt (Columbia River)
 - CTCR, STI, WDFW
 - Monitoring (2015 – Present)
 - Suppression (2017 – Present)
- Lake Spokane (Spokane River)
 - WDFW
 - Suppression (2020-Present)



Washington Department of Fish and Wildlife

Northern Pike Suppression



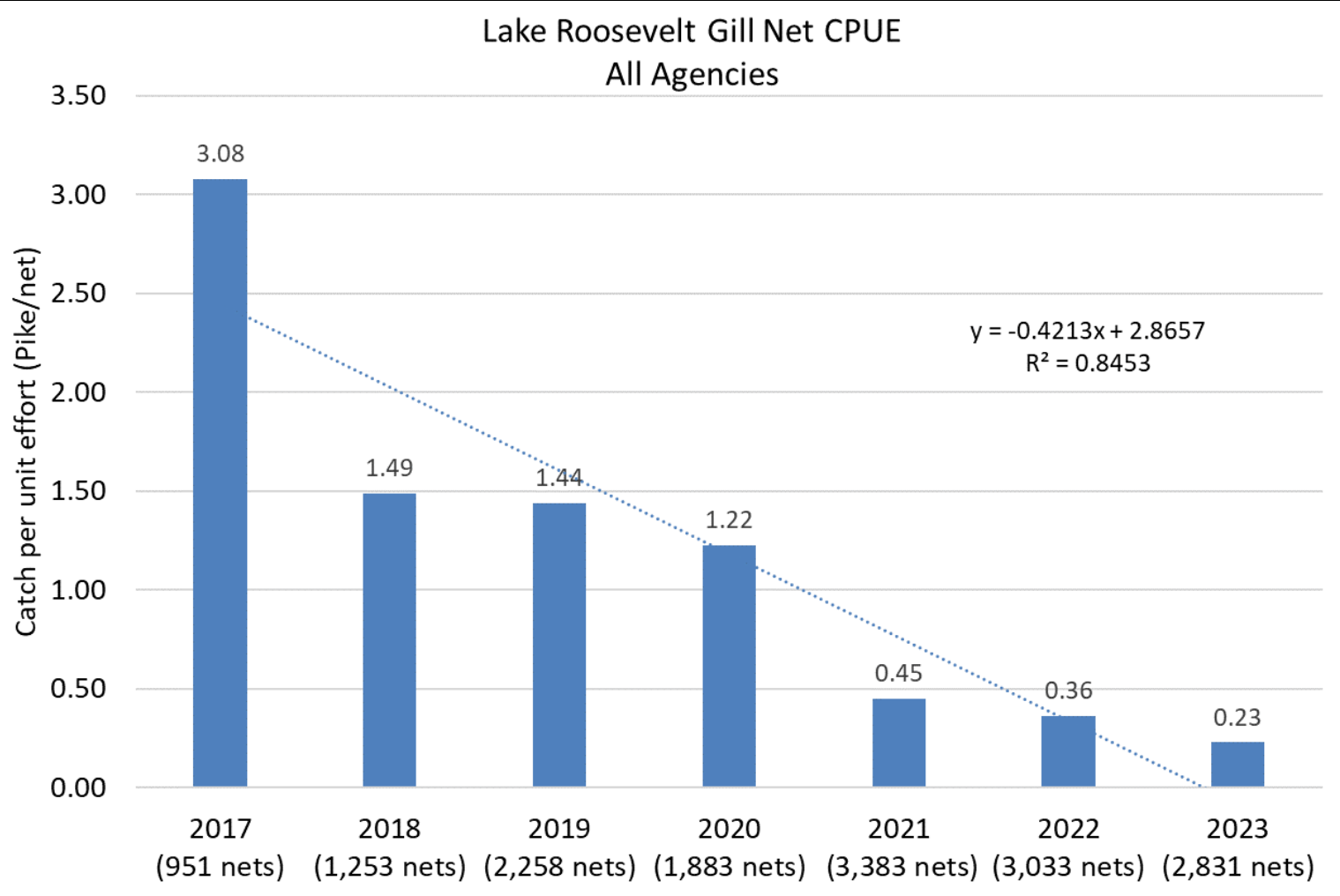
Year	Nets	NP
2019	30	34
2020	90	200
2021	1,203	608
	Seine	209
2022	1,055	463
2023	614	171
Total	2,378	1,514



2023 FDR Suppression

- Effort: 614 Nets
- Total NP: 171
- CPUE: 0.28 NP/Net
- Proportion Positive Catch: 0.20
- Mean TL: 485 mm; (19.1 in)
- TL Range: 320-745 mm; (12.6–29.3 in)
- Mean WT: 927 g (2.0 lbs)
- WT: 150-3,100 g (0.3-6.8 lbs)
- Sex Ratio: 1.1:1 (M:F)
- 23 Species: 6,637 Total Fish

Collaborative Northern Pike Suppression



Confederated Tribes of the Colville Reservation

Spokane Tribe of Indians

Washington Department of Fish and Wildlife

➤ All Hands Participants

2015-Present

19,559 NP Removed All Gears
(Approximately 14K removed via Gill Net)

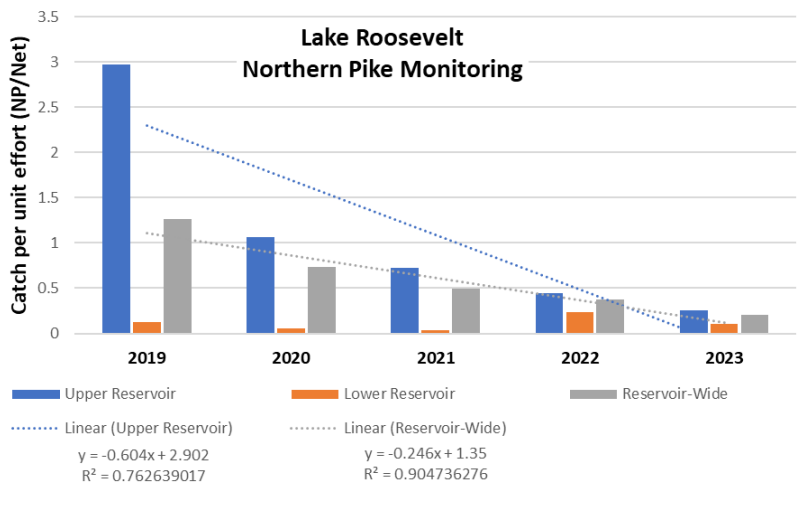
Other gears include:

EF, Seine, Fishery, Reward, Fyke, Angling

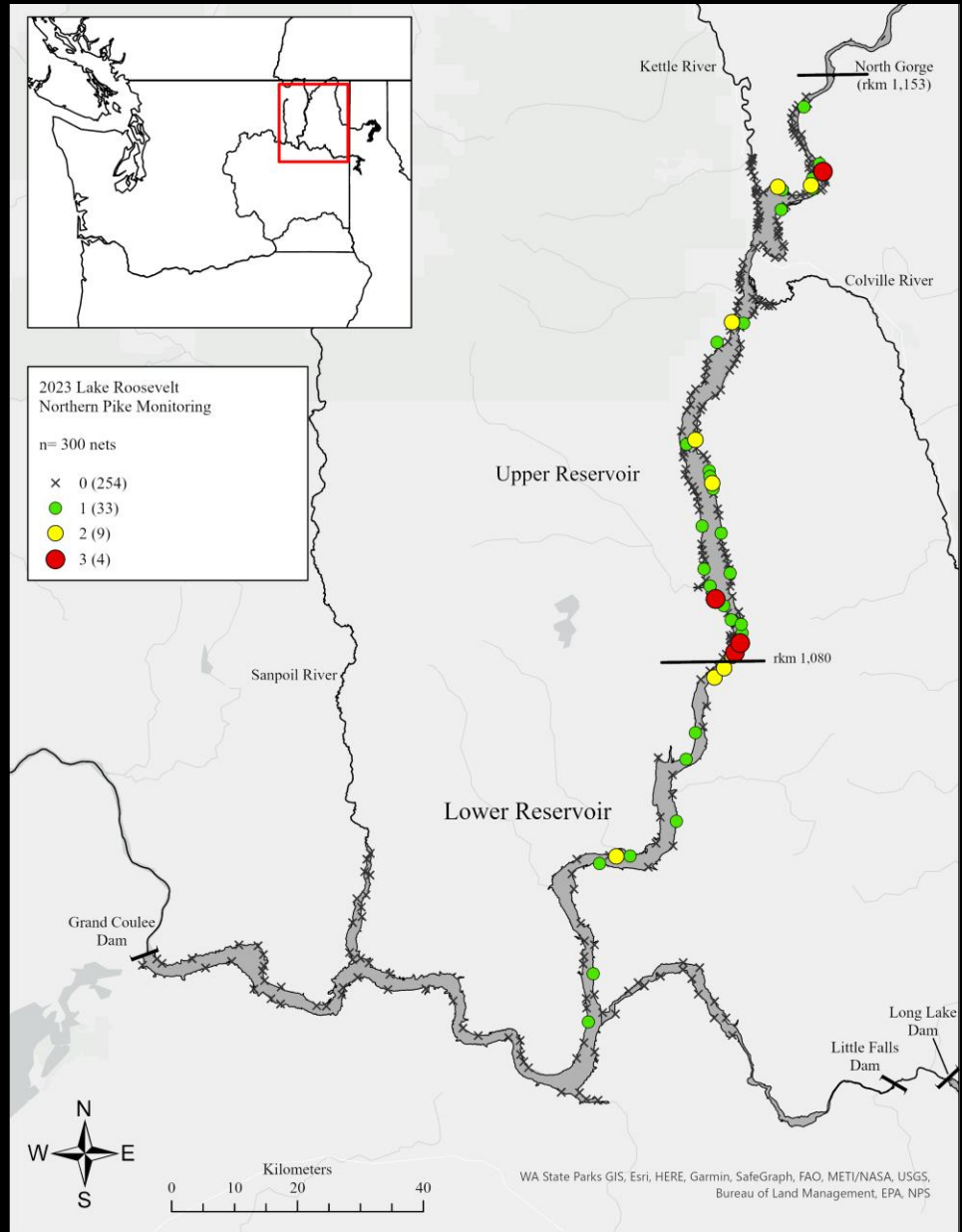
Lake Roosevelt Northern Pike Monitoring

Monitoring Survey Design

- Fall Season (first week of November)
- Geospatial Random-Tessellation Stratified (GRTS)
- Stratified
 - Upper Reservoir (200 nets)
 - Lower Reservoir (100 nets)
- Spatially Balanced
- Equal Probability
- Northern Pike Habitat
 - Slope 25%
 - Depth <50 ft



	2019	2020	2021	2022	2023
Upper Reservoir	2.97	1.06	0.72	0.44	0.26
Lower Reservoir	0.13	0.06	0.04	0.24	0.11
Reservoir-Wide	1.26	0.73	0.49	0.37	0.21

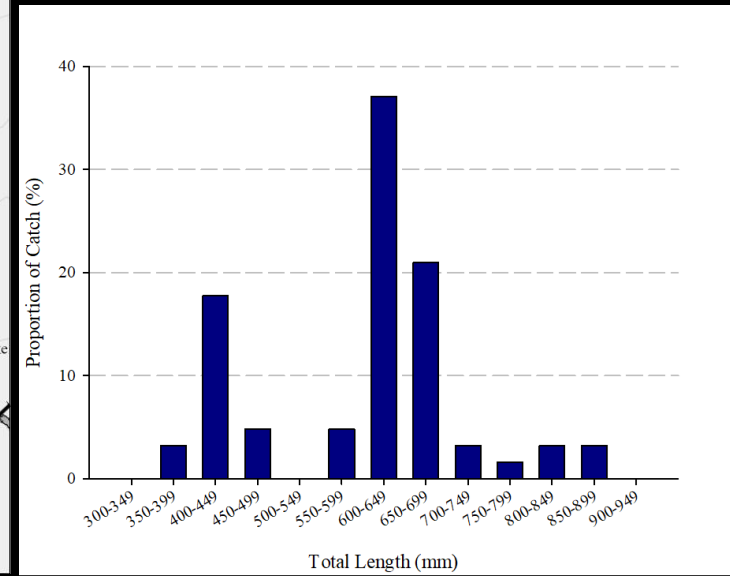


2023

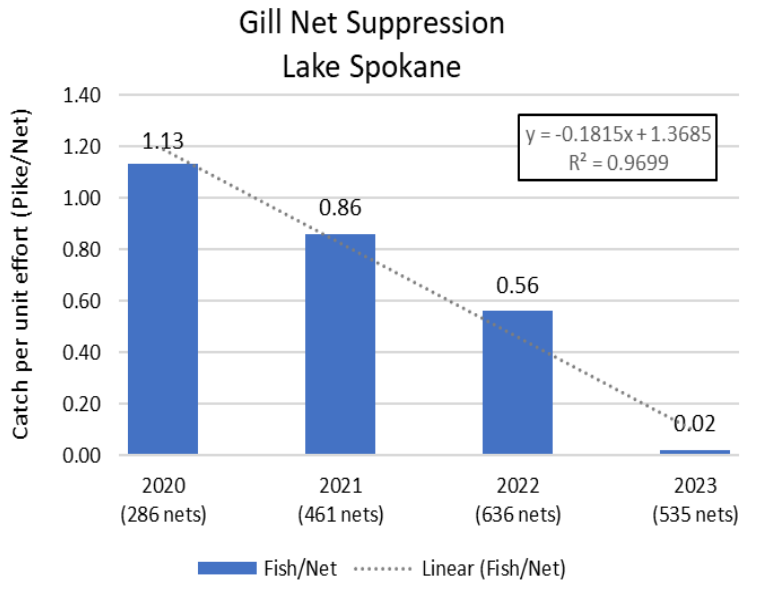
Effort = 300 Nets
 n = 63 Total Northern Pike

- 52 Upper Reservoir
- 11 Lower Reservoir

- Mean TL: 600 mm (23.6 in)
- TL Range 355-880 mm (14.0-34.6 in)
- Mean WT: 1,769 g (3.9 lbs)
- WT: 330 – 6,220 g (0.7 - 13.7 lbs)
- Sex Ratio: 0.9:1.0 (M:F)



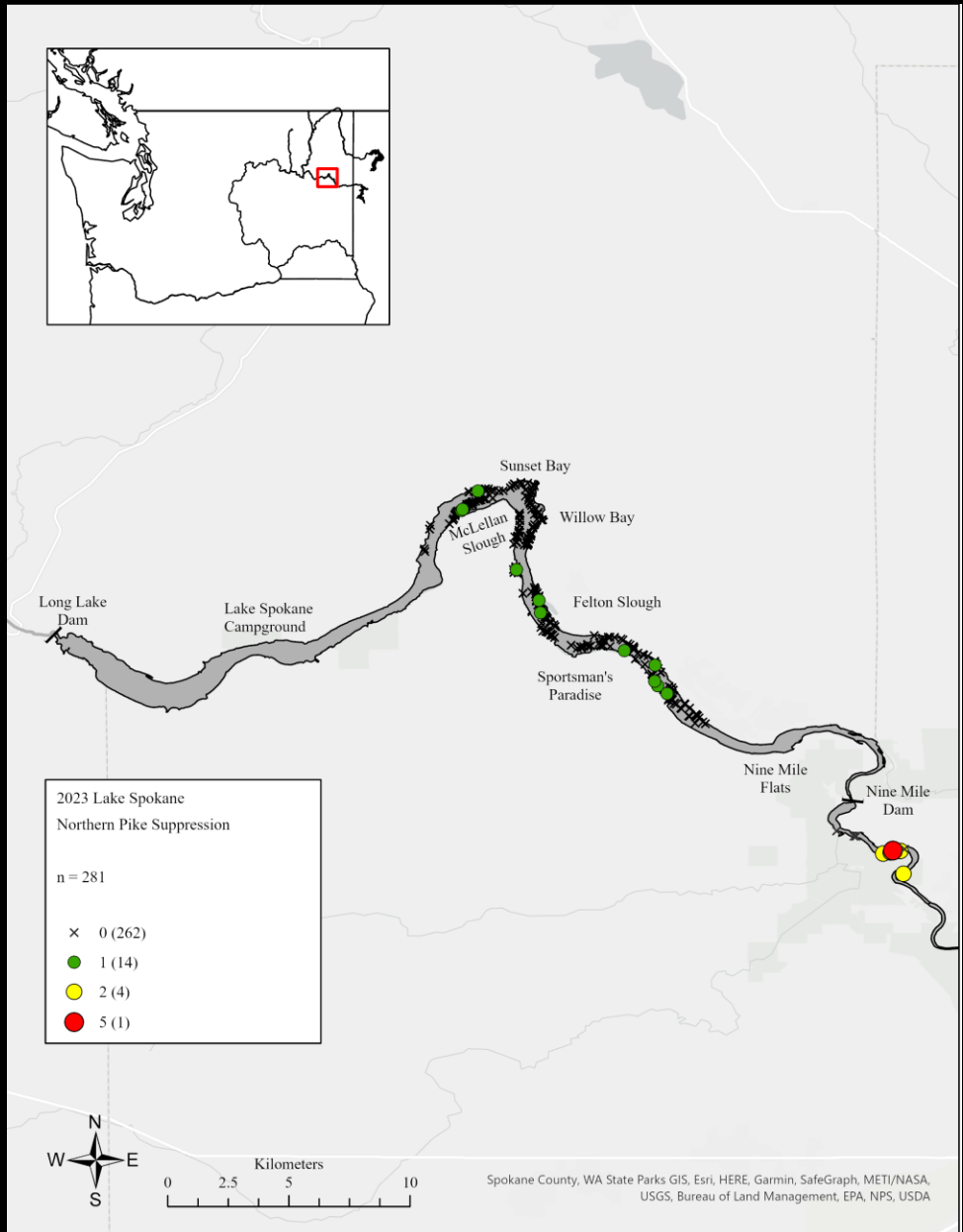
Northern Pike Suppression at Lake Spokane



2023 Lake Spokane
 Efforts = 535 Nets
 N = 11 Northern Pike
 CPUE = 0.02 NP/Net

- Mean TL: 624 mm (24.6 in)
- TL Range: 472-754 mm (18.6-29.7 in)
- Mean WT: 1,964 g (4.3 lbs)
- WT Range 1,964 g (1.4-7.8 lbs)

2020-2023
 1,918 Nets Set
 1,087 Northern Pike Removed



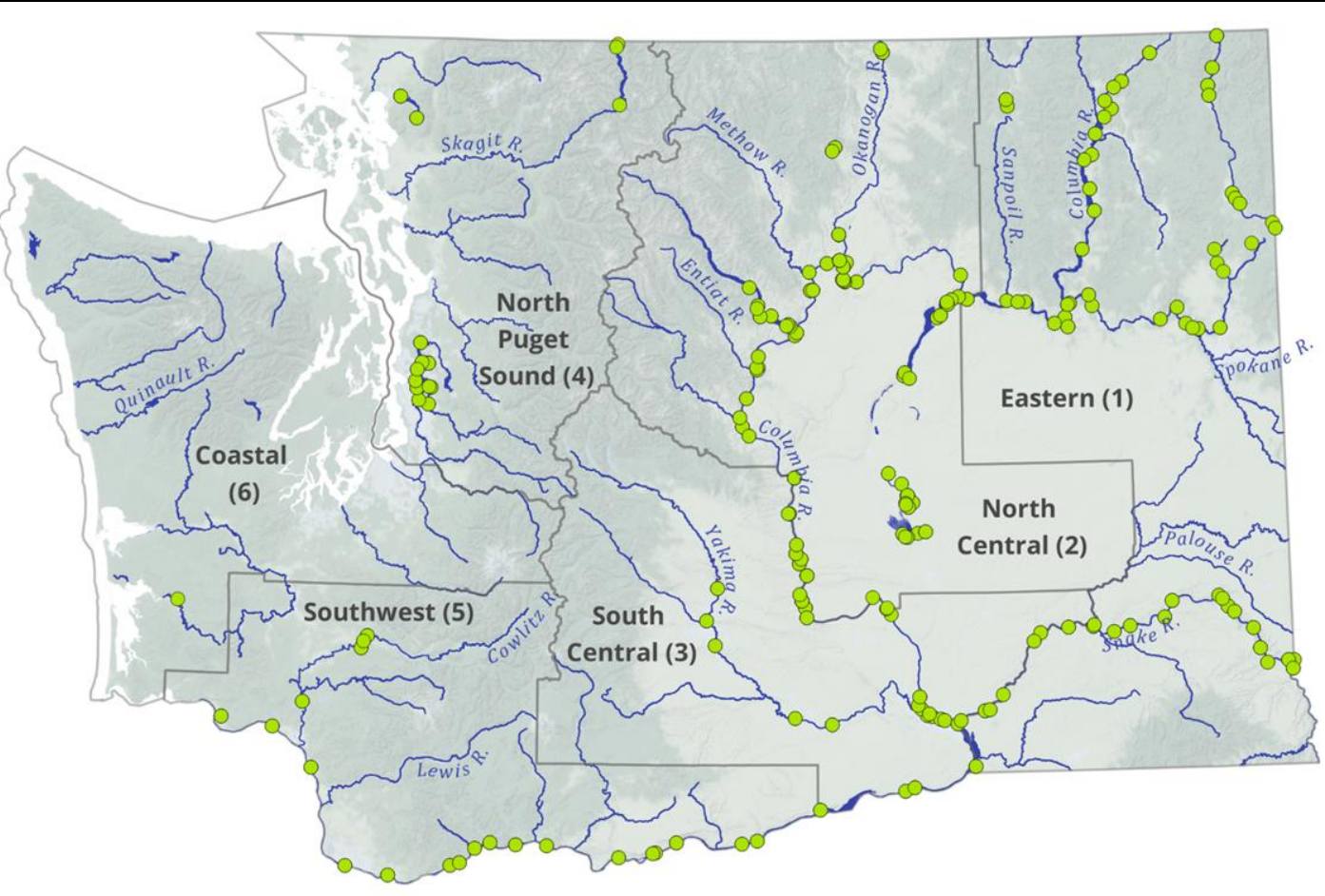
2023 Nine Mile Reservoir
 Effort = 12 Nets
 N = 16 Northern Pike
 CPUE = 1.33 NP/Net

- Mean TL: 784 mm (30.9 in)
- TL Range: 666-1,080 mm (26.2-42.5 in)
- Mean WT: 4,383 g (9.7 lbs)
- WT Range 2,190 – 10,580 g (4.8-23.3 lbs)

Spokane County, WA State Parks GIS, Esri, HERE, Garmin, SafeGraph, METI/NASA, USGS, Bureau of Land Management, EPA, NPS, USDA

Early Detection

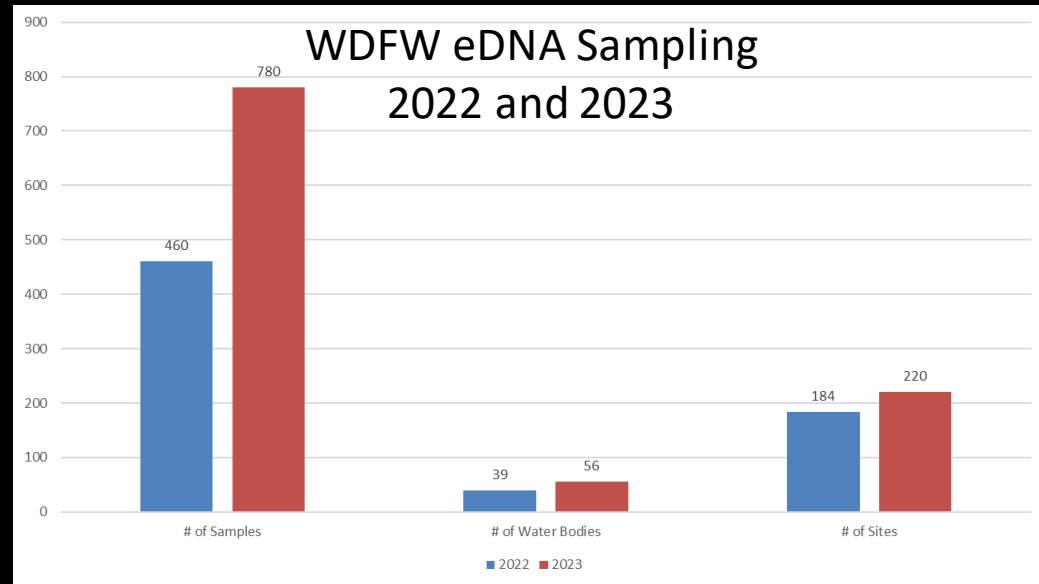
eDNA Sampling Initiated in 2019



WDFW 2023

- 56 Water Bodies throughout Washington State
- 220 Sites
- 780 Samples

No New Detections



Northern Pike Rapid Response



FOUR PEAKS
ENVIRONMENTAL
Science & Data Solutions

STATE OF WASHINGTON INTERAGENCY NORTHERN PIKE RAPID RESPONSE PLAN

June 2023

Prepared for

Washington Department of Fish and Wildlife
Natural Resources Building
111 Washington St SE
Olympia, Washington 98501

Prepared by

Four Peaks Environmental
Science & Data Solutions
338 South Mission Street
Wenatchee, Washington 98801

- Prevention and Early Detection
- Rapid Response Activities
- Extended Response Activities

Thanks to our many partners.



Questions?

Lake Spokane 2023
First Pike of the Season

