

# Montana AIS Update

**TOM WOOLF**  
**AIS BUREAU CHIEF**



# 2023 Season:

- 17 Stations.
- Over 130,000 watercraft inspected.
  - 600 with weeds
  - 53 Intercepted with mussels.
  - 8,000 Decons
  - 8 illegal fish/bait.
- QA/QC focus.
- Partnerships.





# FWP's AIS Team







YAAK VALLEY FOREST COUNCIL

# Partnerships

**OUR LAKE  
OUR FUTURE**

*Whitefish Lake* | Aquatic Invasive Species Management Program



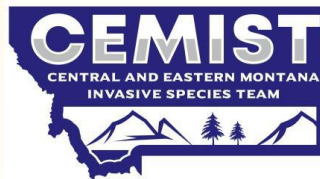
Missoula County  
**WEED DISTRICT  
& EXTENSION**



**Lincoln**  
CONSERVATION DISTRICT



**FLATHEAD LAKE  
BIO STATION**  
UNIVERSITY OF MONTANA



WESTERN MONTANA  
**Conservation  
Commission**



**BIG HORN**  
CONSERVATION DISTRICT

**TROUT UNLIMITED**



**Whitefish Lake  
INSTITUTE**



Garfield County  
Conservation  
District



McCone  
Conservation District



**BEAVERHEAD**  
CONSERVATION DISTRICT



**POWDER RIVER**  
Conservation District  
Broadus, MT 59317



**FLATHEAD  
LAKERS**



# Inspection Station Partners

## Partners (Contracted):

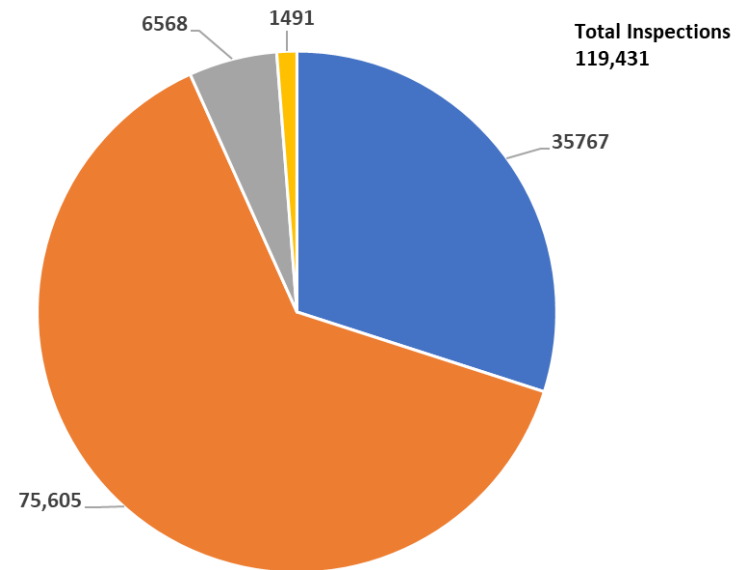
- Confederated Salish and Kootenai Tribes (Ravalli & Thompson falls)
- Blackfeet Nation (Browning)
- Missoula County (Clearwater Junction)
- Garfield Conservation District (Flowing Wells & Wibaux)
- McCone Conservation District (Nahsua)
- Beaverhead Conservation District (Dillon)
- Bighorn Conservation District (Hardin & St.Xavier)
- Powder River Conservation District (Broadus)
- Lincoln Conservation District
- Flathead Conservation District

## Other Inspection Station Partners

- City of Whitefish
- Swan Lakers
- Glacier National Park
- Yellowstone National Park
- US Army Corps of Engineers



Total Inspections by FWP and Partner Stations, 2022

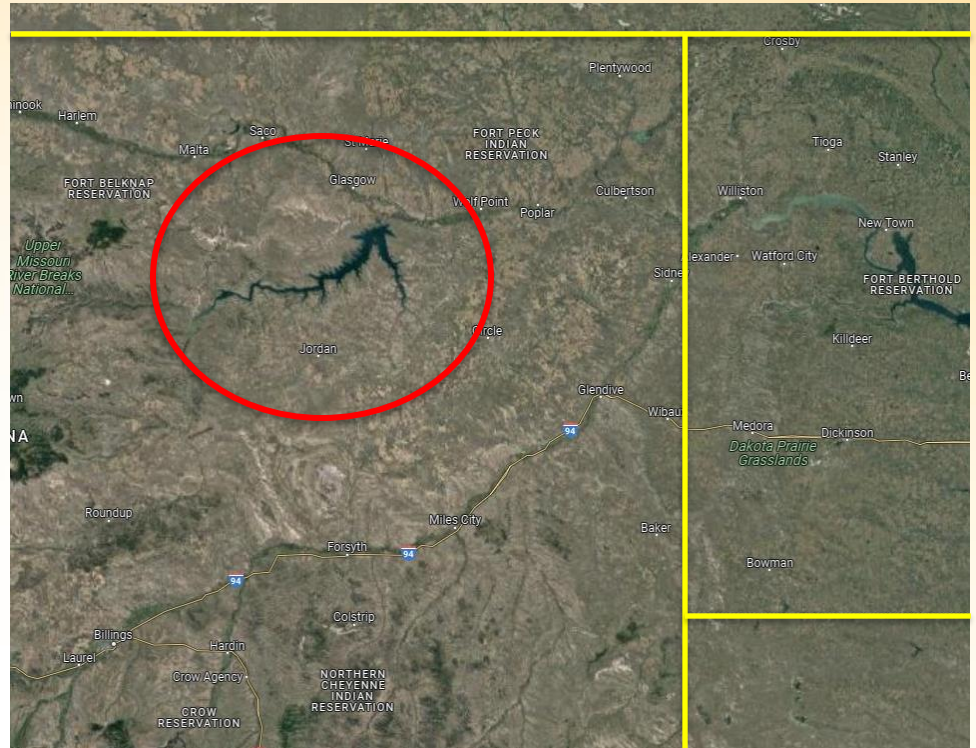


■ FWP Operated Stations ■ Partner Stations ■ Glacier National Park ■ City Of Whitefish

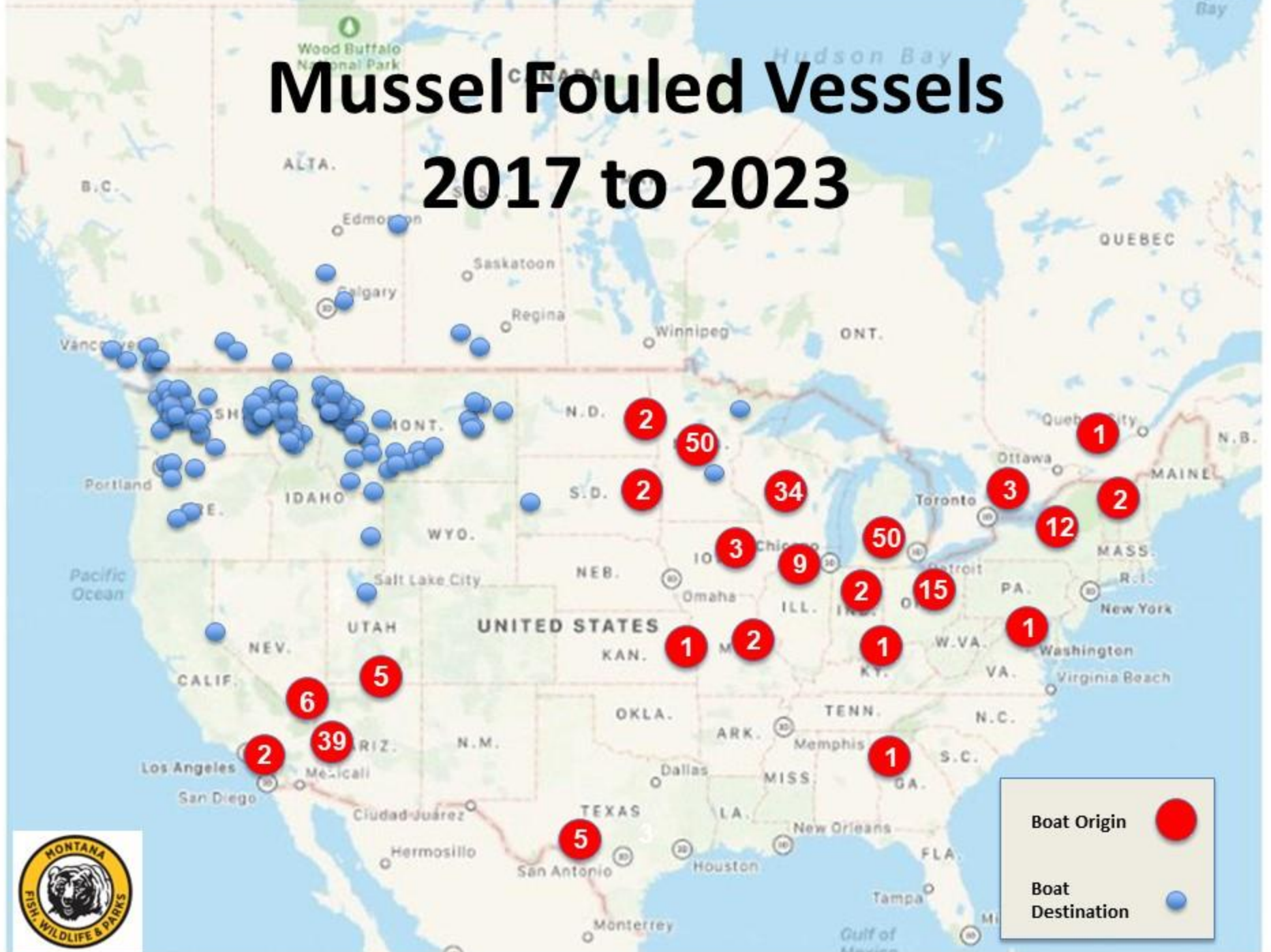


# Fort Peck Project

- Profiling out of state boats.
- Verify Inspection before launch.
- 411 boaters interviewed.
- 10 Not Inspected:
  - Half after hours
  - Half odd routes



# Mussel Fouled Vessels 2017 to 2023

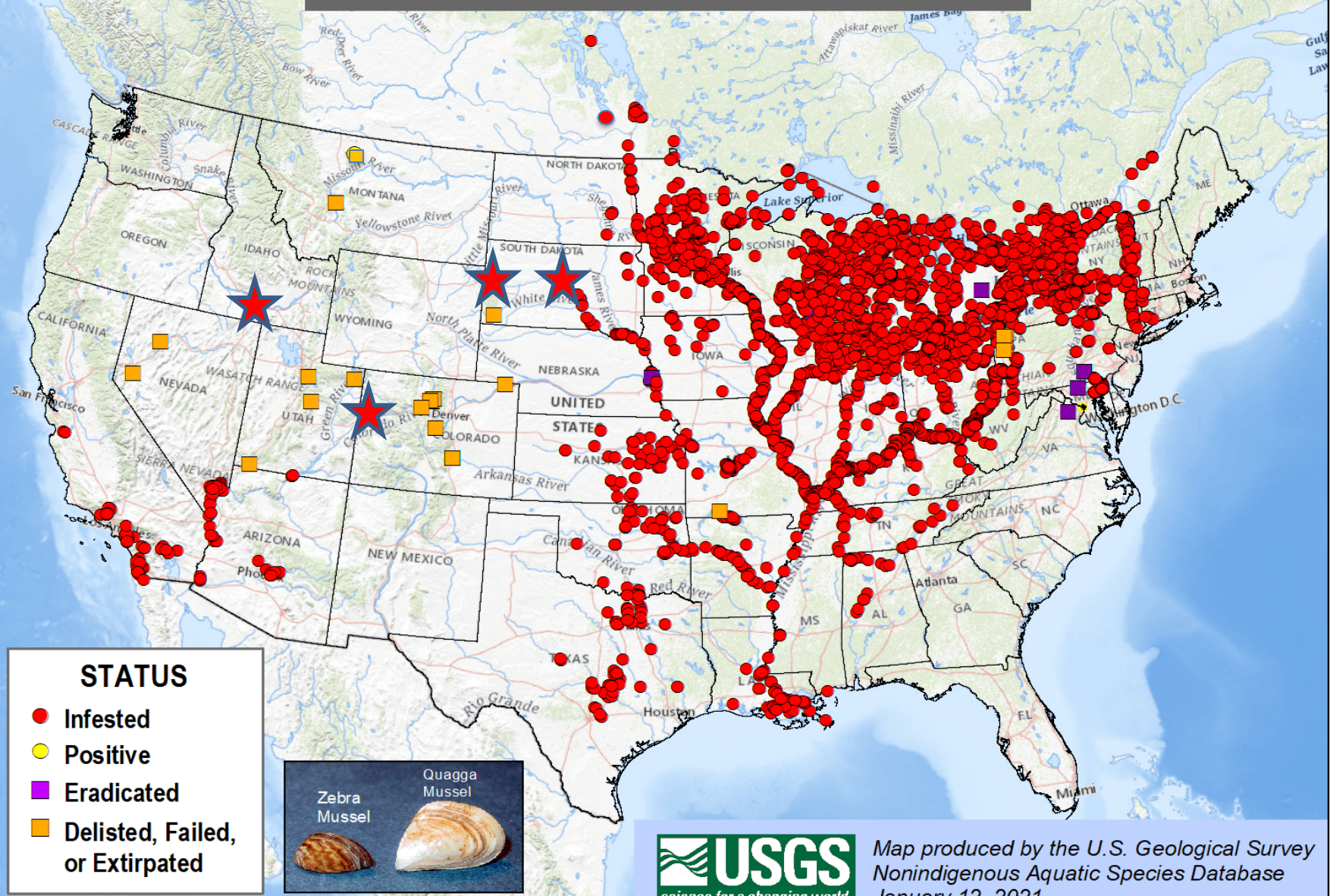


Boat Origin	
Boat Destination	



# Zebra and Quagga Mussel Sightings Distribution

*Dreissena polymorpha* and *D. rostriformis bugensis*



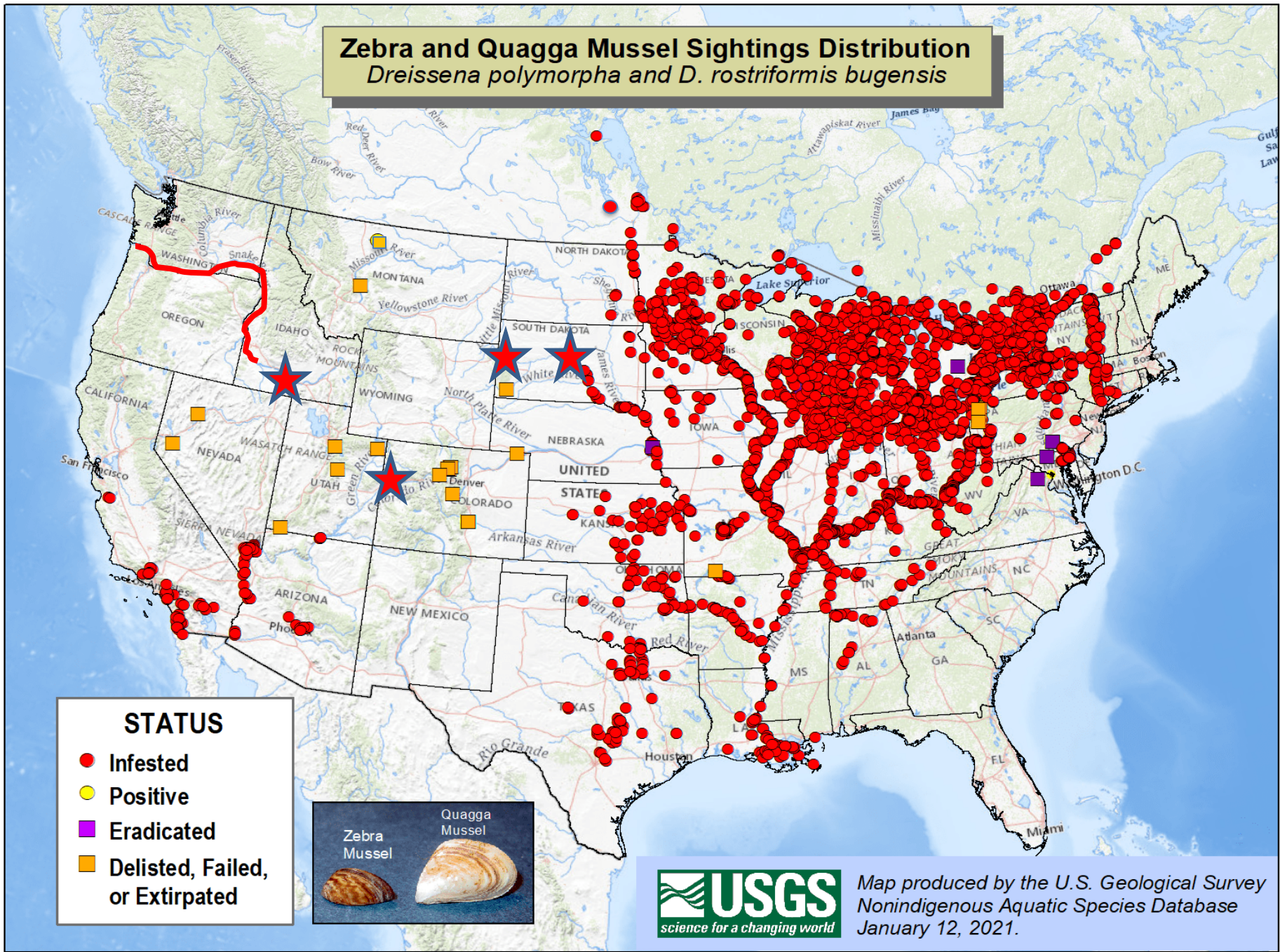



# Zebra and Quagga Mussel Sightings Distribution

*Dreissena polymorpha* and *D. rostriformis bugensis*

**STATUS**

- Infested
- Positive
- Eradicated
- Delisted, Failed, or Extirpated

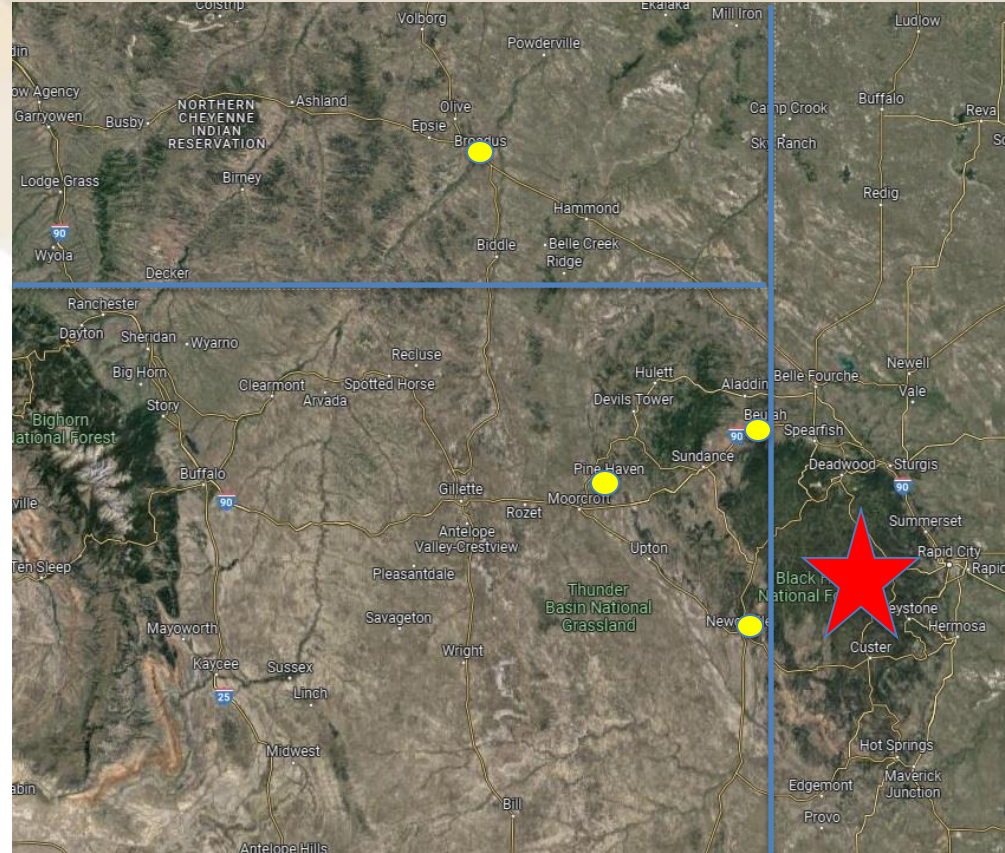


Map produced by the U.S. Geological Survey  
Nonindigenous Aquatic Species Database  
January 12, 2021.



# Pactola Reservoir

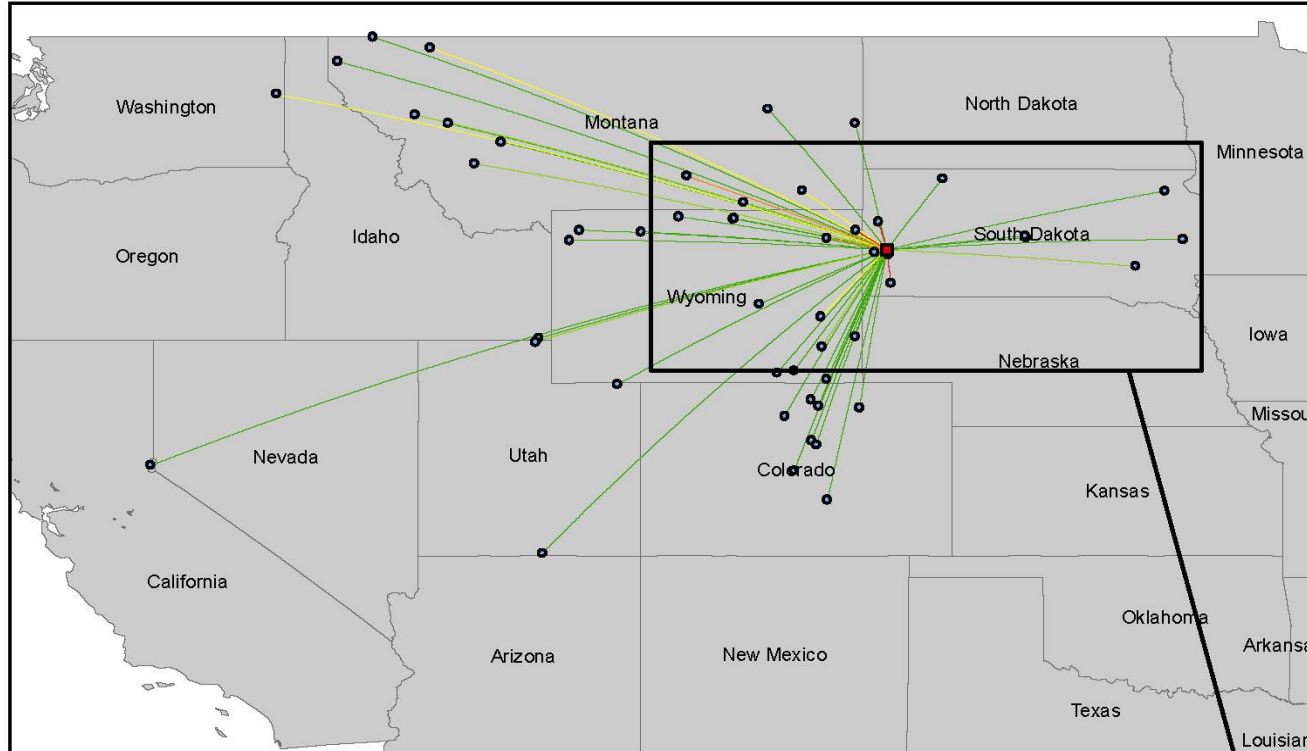
- Zebra mussels detected 2022.
- USFS and BOR: Land and dam ownership.
- SDGF stations operated by Conservation District.
- Less than 20% inspected.
- Requested FWP Assistance in Sept:
  - 73 mussel fouled boats intercepted the first two weeks of September.





# Boat Inspections Where Pactola Reservoir Was Last Water Visited

2021 - 2022



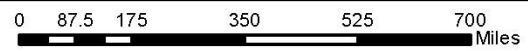
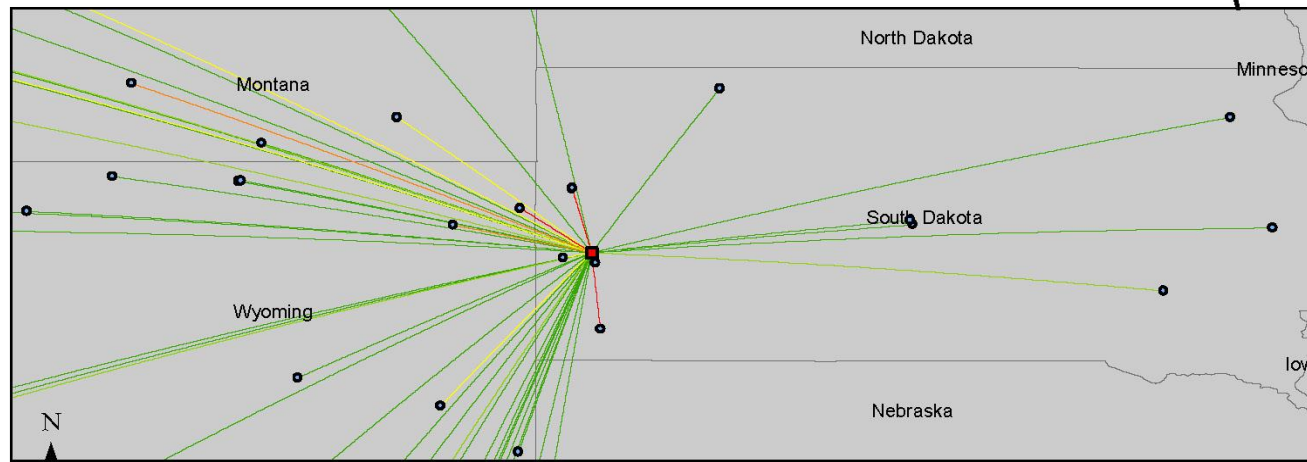
**Legend**

- Pactola Reservoir
- WID Locations

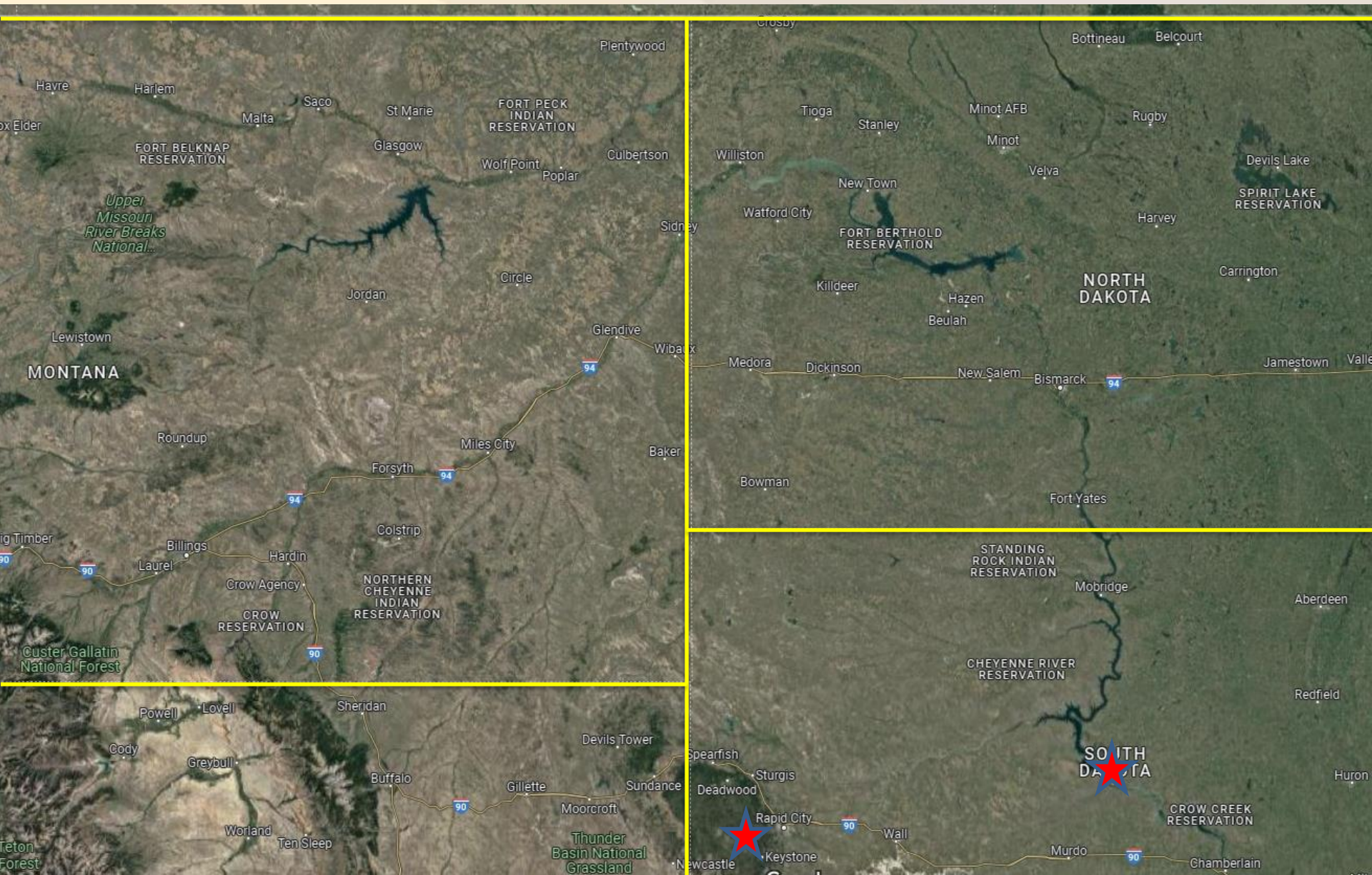
**Boats That Report Pactola As A Last Water Visited**

- 1 - 4 (35)
- 5 - 9 (5)
- 10 - 25 (5)
- 26 - 49 (5)
- 50+ (5)

Inspection Location	Boats
Pactola Reservoir	1878
Angostura Reservoir	453
Sheridan Lake	200
Belle Fourche - Rocky Point RA	132
Beulah Visitor Center	99
Belle Fourche Reservoir (Orman Dam)	44
Lake Sheridan	42
Hardin	36
Keyhole Reservoir	29
Deerfield Reservoir	23
Glacier National Park	16
Spokane	16
Broadus	14
Glendo Reservoir	10
Mitchell Motor Carrier	8
Grant	6
Hwy 89 Garden City	6
Ravalli	6
Anaconda	5
Shadehill Reservoir	4
Tongue River Reservoir State Park	4
Bear Lake	3
Cheyenne I-25 POE	3
Clearwater Junction	3
Helena - Highway 12	3

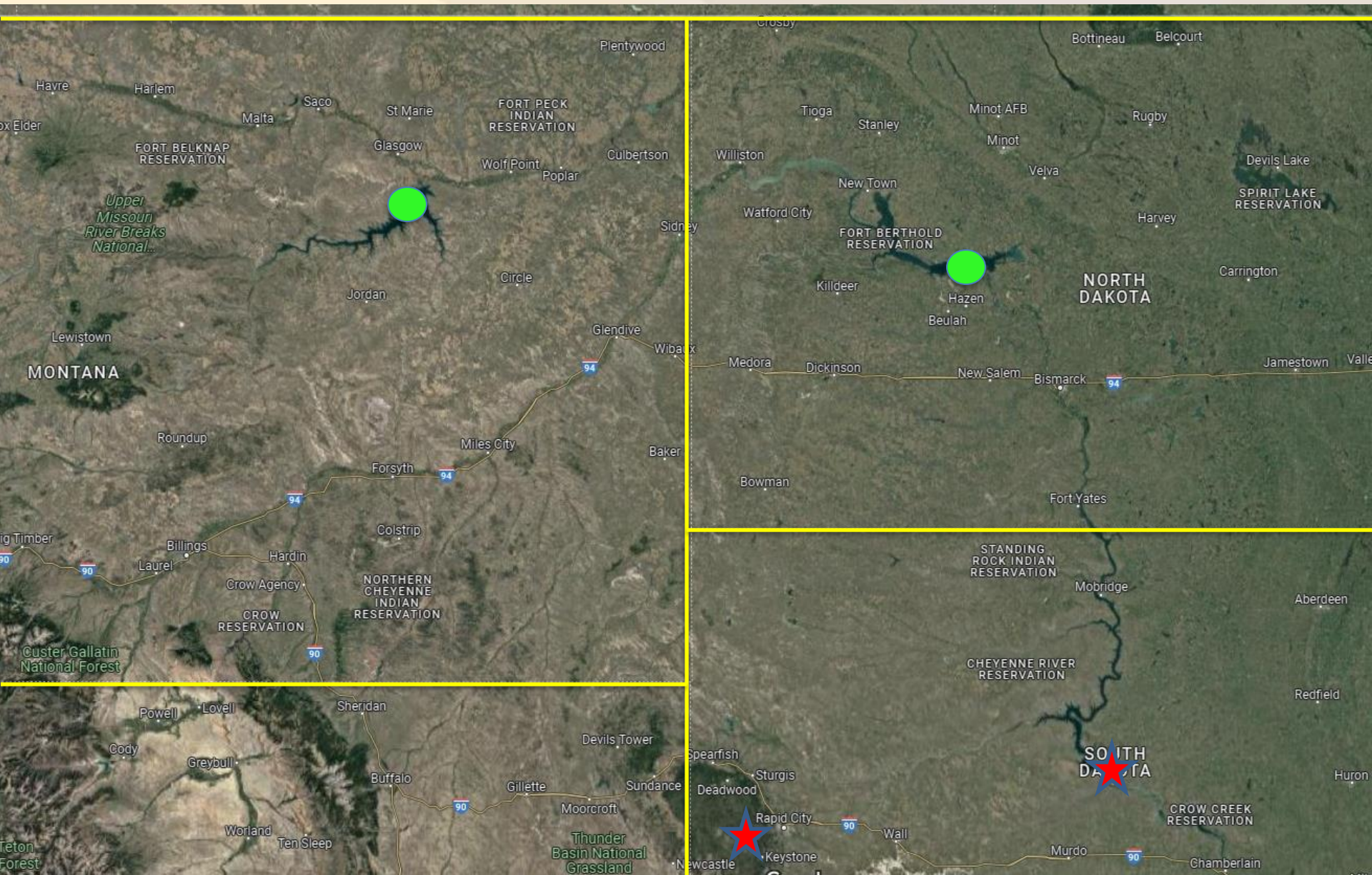


# Missouri River Impoundments





# Missouri River Impoundments





# AIS Outreach



MONTANA FISH,  
WILDLIFE & PARKS



ATTENTION FORT PECK  
RECREATIONISTS

**CLEAN. DRAIN. DRY.**

LEARN MORE!



**CLEAN.  
DRAIN.  
DRY.**



HELP STOP THE  
SPREAD OF AQUATIC  
INVASIVE SPECIES



MONTANA FISH,  
WILDLIFE & PARKS



**CLEAN. DRAIN. DRY.**

FOR A HEALTHY  
GALLATIN RIVER



CleanDrainDryMT.com

Come Clean Leave Clean





# Dumping aquarium pets is illegal.



## Releasing a pet in the wild is never the right thing to do.

Released pets and plants can become invasive, harm native plants & animals, and be expensive to remove. Instead, contact a pet store or shelter.

[DontLetItLoose.com](http://DontLetItLoose.com)



Call 1-800-TIP-MONT to report illegal dumping.



## Anglers Can Stop Aquatic Invasive Species

Take these simple steps every time you fish to be sure you're not moving invasive species from one waterbody to another.

### CLEAN

all plants, mud and debris from fishing gear, waders and boots before leaving the water. Use a scrub brush if needed.

### DRAIN

any standing water from gear. A sponge can help.

### DRY

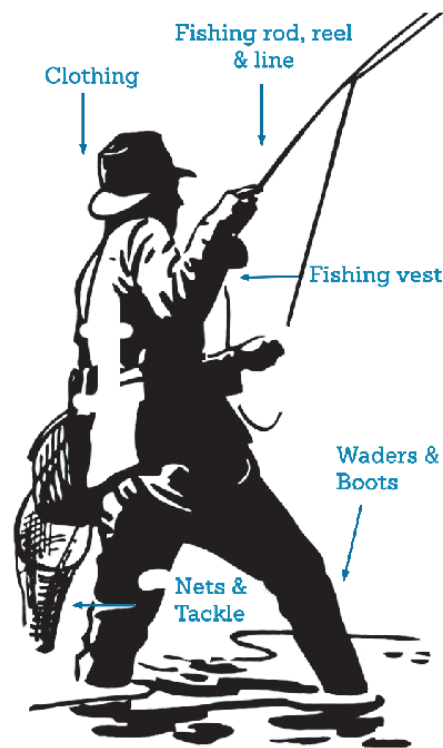
everything before using it again. Gear should be dry to the touch. When possible use **different waders for different waterbodies.**

### DISPOSE

of unwanted bait in the trash, not on land or in the water.

### NEVER

transport plants, fish or animals into a different body of water.



Fishing Outfitters Association of Montana



**MONTANA FISH,  
WILDLIFE & PARKS**

[CleanDrainDryMT.com](http://CleanDrainDryMT.com)



# Outreach Partnerships

- Central & Eastern MT Invasive Species Team  
USACE, USFS, USFWS, BOR
- Irrigation districts, Utilities, TU, WU, CDs, lake associations, watershed districts, NGOs.
- Marketing Campaign
- Industry Outreach
- Outreach Events
- AmeriCorps Members





# AmeriCorps Members





# Social Media



*Pedro Pascal may be a delight, but aquatic invasive species are not! To protect Montana's waters from these aquatic invaders, remember to clean-drain-dry your gear after every use and don't release aquarium plants or pets into the wild. To learn more, go to [FWP.mt.gov/AIS](http://FWP.mt.gov/AIS)."*





# Focus Areas for 2024

- Containment in Idaho and South Dakota.
- Expand operational window for Montana WID stations.
- Investigate additional stations.
- Expand partnerships.
- Expanded social media.
- Focused boater outreach.
- Outreach focused on used boat sales pathway.





MONTANA FWP

**PROTECT OUR  
WATERS**

**[FWP.MT.gov/AIS](http://FWP.MT.gov/AIS)**

