



Columbia River Basin Mussel Monitoring Data Repository and Map Use and Standardization

JUNE 2023

ROBYN DRAHEIM

Dreissenid Monitoring

- ▶ Regional Mapping
- ▶ Monitoring Updates:
2022 results and 2023 plans
- ▶ Regional Needs

Quagga and Zebra Mussel Monitoring

Protecting the West



Overview

2022

2021

2020

2019

2018

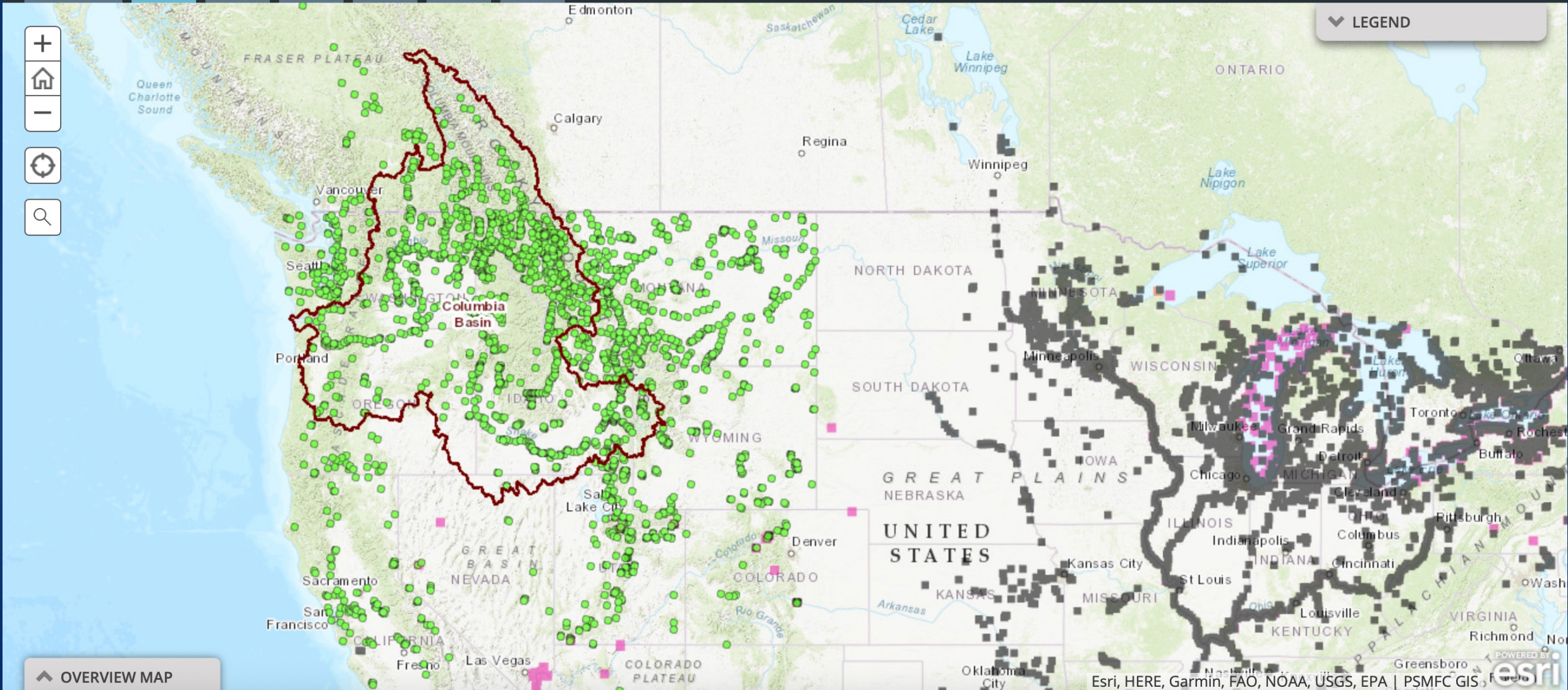
2017



▼ LEGEND

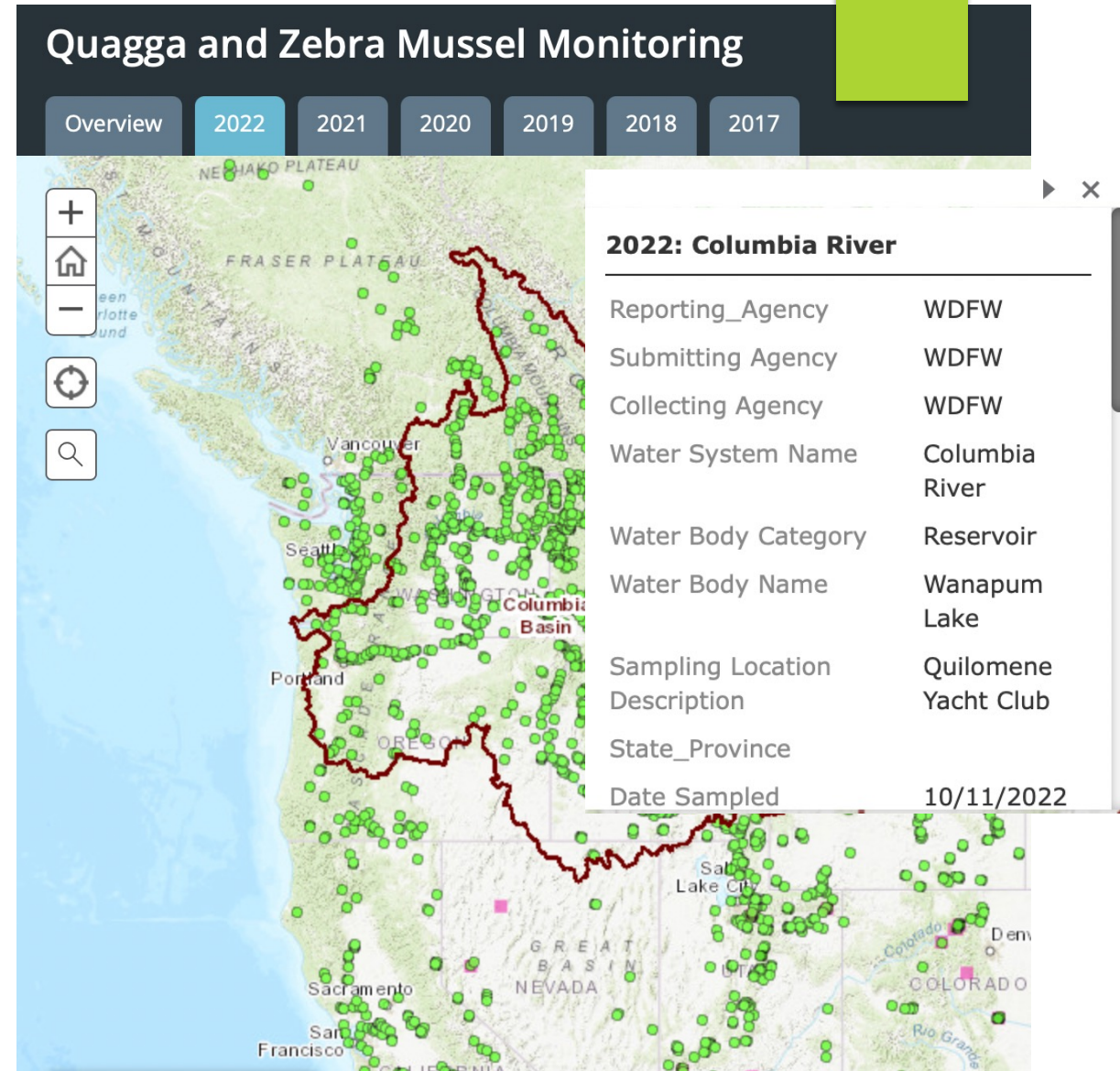
OVERVIEW MAP

Esri, HERE, Garmin, FAO, NOAA, USGS, EPA | PSMFC GIS



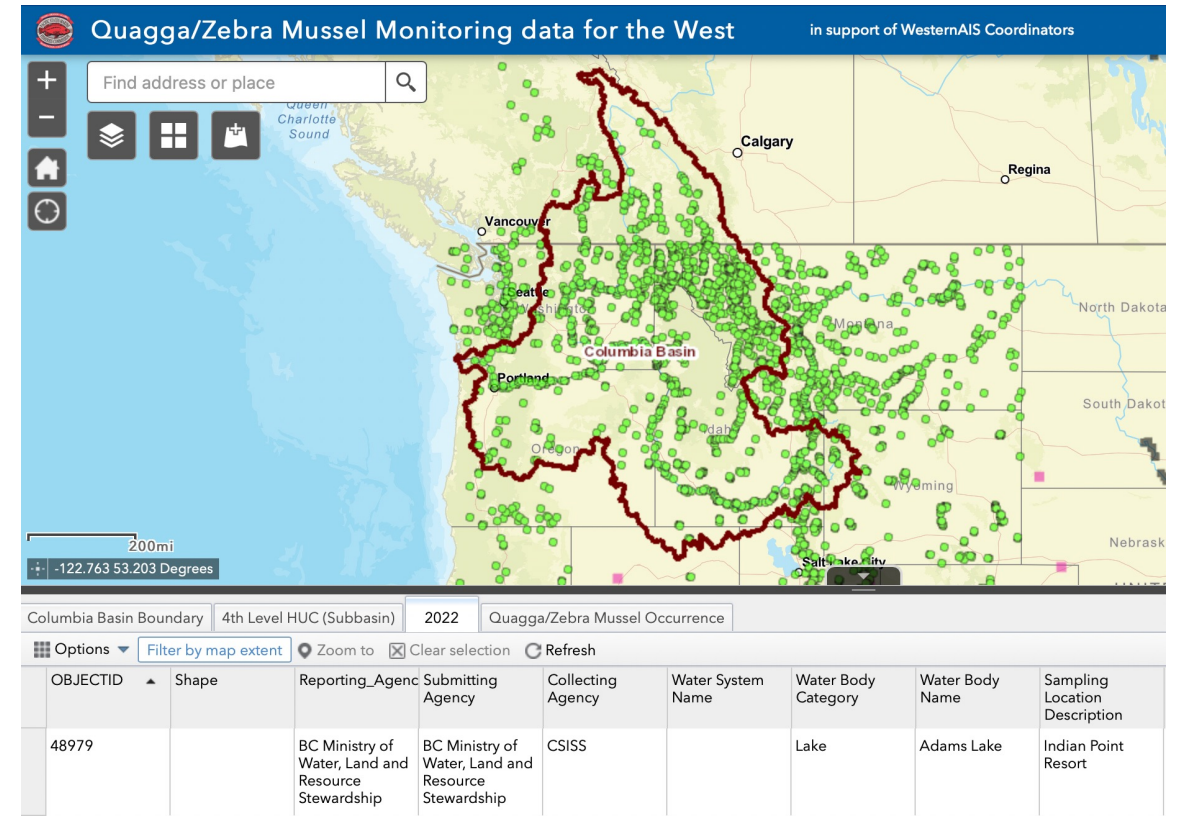
Monitoring Updates:

- ▶ Map completed in June
- ▶ 23 data submitting entities in the CRB
- ▶ Most Western States included
- ▶ Discussion:
 - ▶ Revisit data collection goals*
 - ▶ Geographic scope
 - ▶ Dedicated funding source for GIS support



Future Planning

- ▶ Data collection January?
- ▶ Dashboard privacy
 - ▶ Password protected
 - ▶ Public?



<https://psmfc.maps.arcgis.com/apps/webappviewer/index.html?id=8a2a60c3172c4f03b845016fbe268fa8>

Regional Needs

- ▶ Critical collaboration/coordination role?
- ▶ Regional monitoring priorities?
- ▶ Capacity?
- ▶ Response planning?

