



Kevin Netcher  
Aquatic Invasive Species  
Coordinator  
Nevada Department of Wildlife

[kevin.netcher@ndow.org](mailto:kevin.netcher@ndow.org)

(775) 688-1532



# 2024 Nevada WID Stations

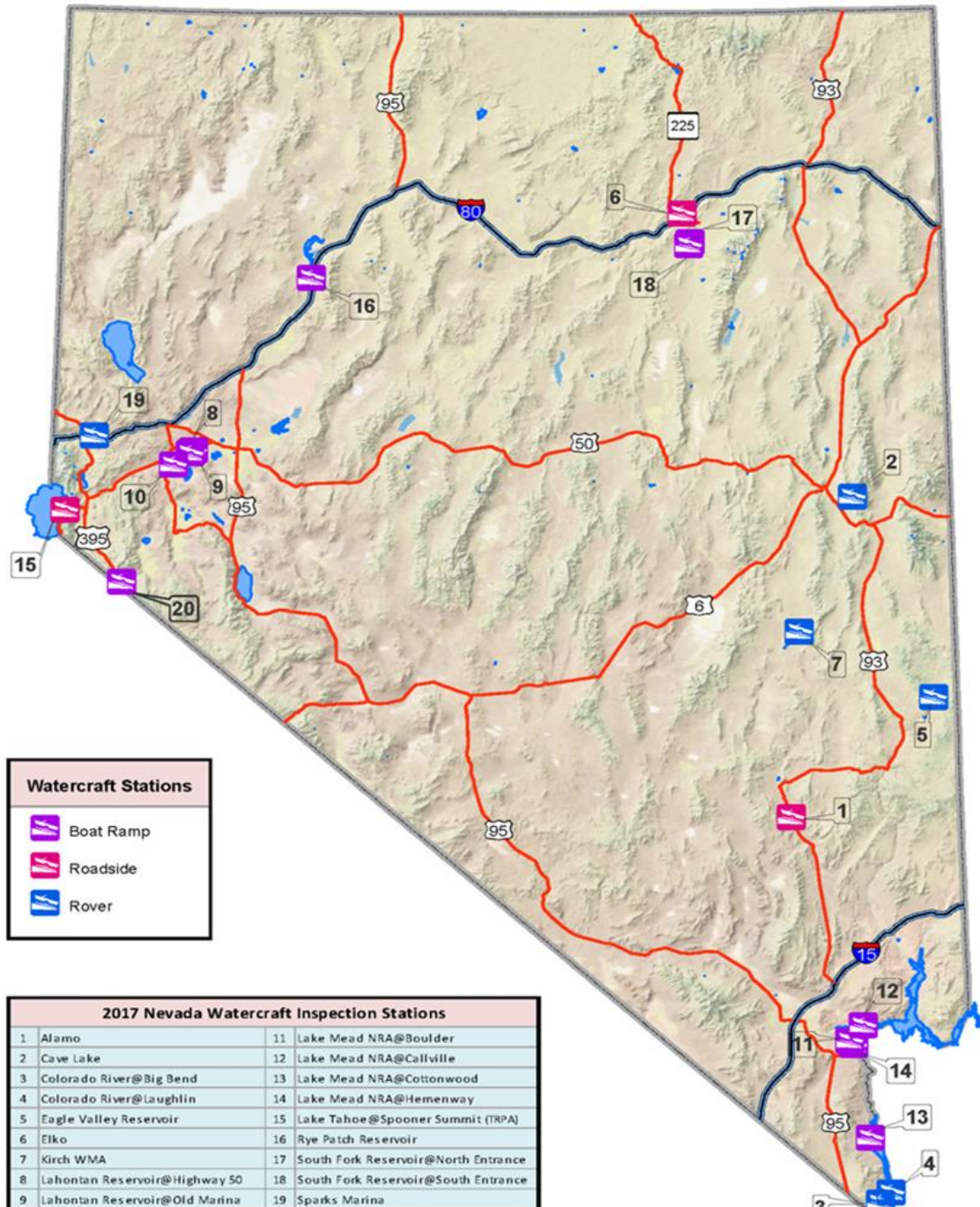
Seasonal Boat Ramp Stations (April – October) at Southfork, Rye Patch, Lahontan, Wildhorse, and Topaz Reservoirs.

Year-round Boat Ramp Stations at Lake Mead. Alamo Roadside operates year-round.

Stations at Spooner Summit and Lake Tahoe operated by TRPA.

Rover stations on demand.

2023 – 15,987 inspections and 552 decontaminations

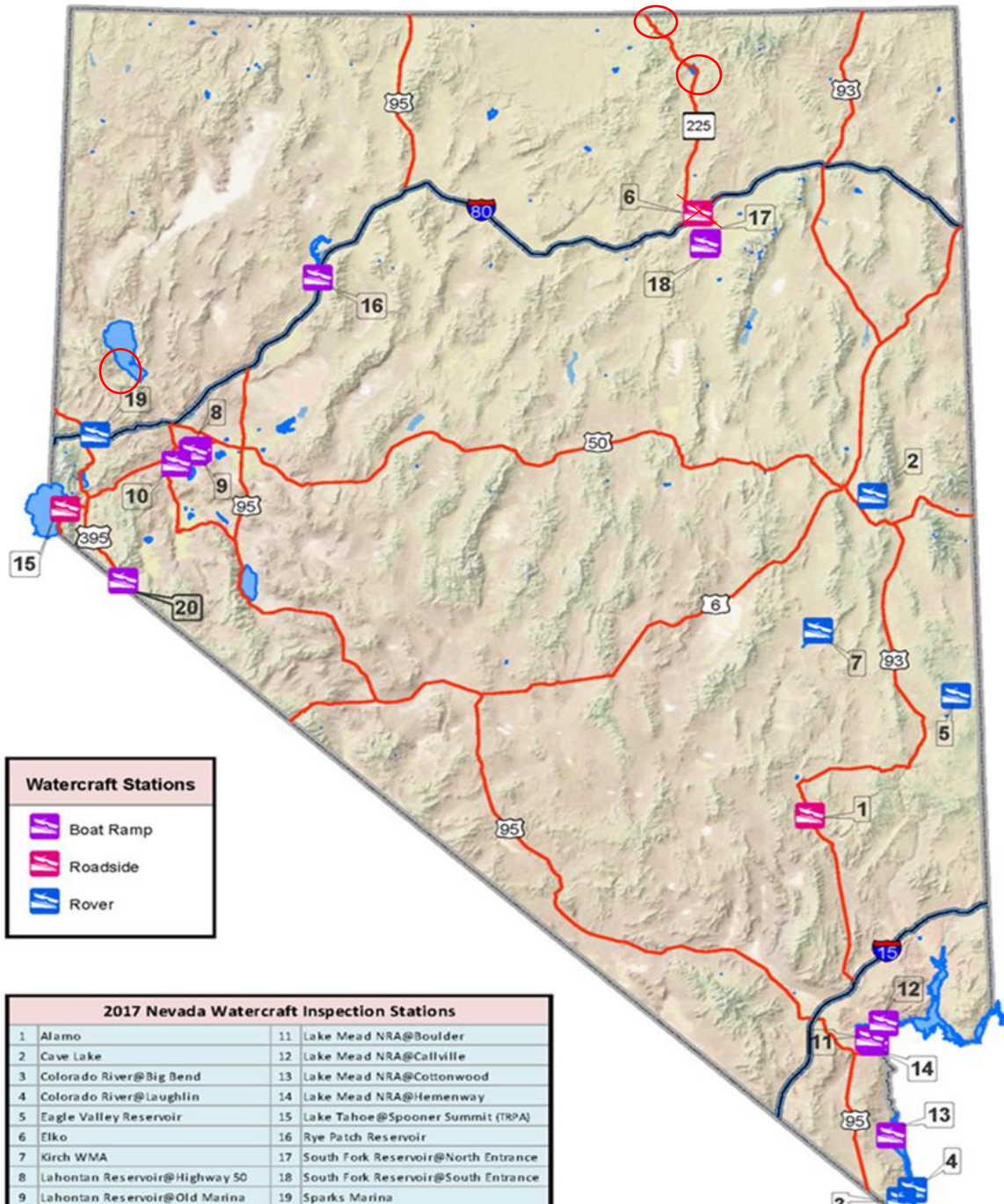


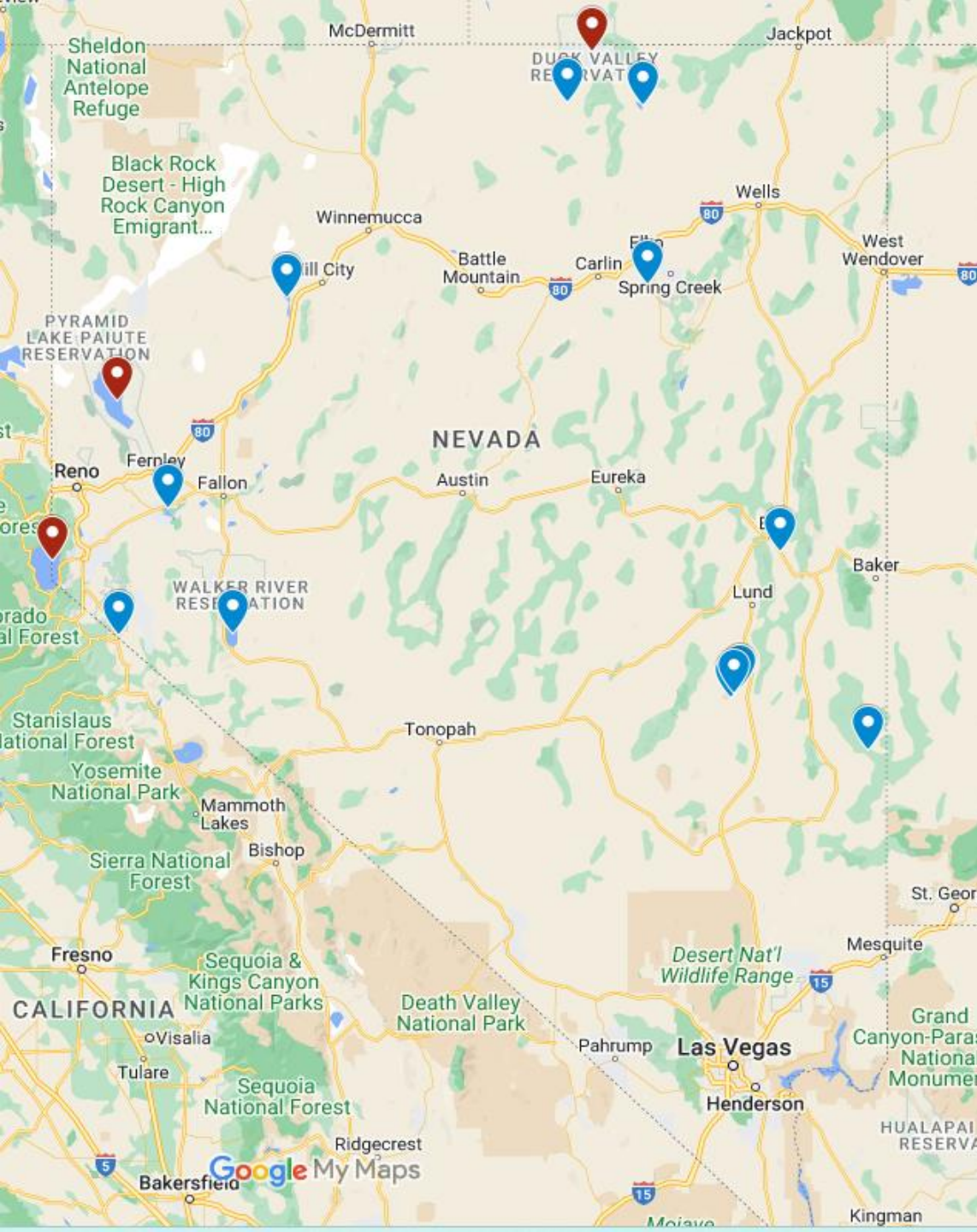
# 2024 Nevada WID Stations

Elko Roadside Station moved to Wildhorse Reservoir.

Pyramid Lake Paiute Tribe operates a WID station at Sutcliffe, Nevada during fishing season.

Roadside WID station operated in Owyhee, NV by the Shoshone – Paiute Tribes of the Duck Valley Indian Reservation.





# 2024 QM/ZM Monitoring

- Topaz Reservoir (qPCR, microscopy)
- Lahontan Reservoir (qPCR, microscopy)
- Rye Patch Reservoir (qPCR, microscopy)
- Walker Lake (microscopy)
- South Fork Reservoir (qPCR, microscopy, substrate)
- Wildhorse Reservoir (qPCR, microscopy, substrate)
- Wilson Reservoir (qPCR, microscopy)
- Adams-McGill Reservoir (qPCR, microscopy)
- Cold Springs Reservoir (qPCR, microscopy)
- Haymeadow Reservoir (qPCR, microscopy)
- Eagle Valley Reservoir (qPCR, microscopy)
- Comins Lake (substrate)



# SPAM!

- Oct 5, 2023 – May 31, 2024
  - Lake Mead, Lake Mohave and Lower Colorado River.
  - 1,584,877 Campaign Impressions
  - Click through rate of 0.31% - 4,893 directed to additional AIS messaging.
- Expanded to Northern Nevada, May 1 – Oct 30.
- Developing a commercial that will air on NBC affiliated streaming apps in Nevada. Hulu, Peacock etc...



