



Montana's Battle Against Aquatic Invasive Species


CLEAN. DRAIN. DRY.



The Montana Department of
Natural Resources
& Conservation

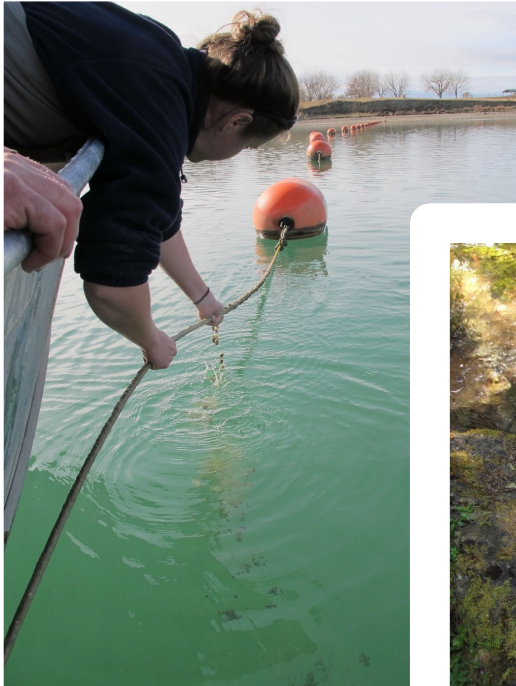


*Montana Fish,
Wildlife & Parks*

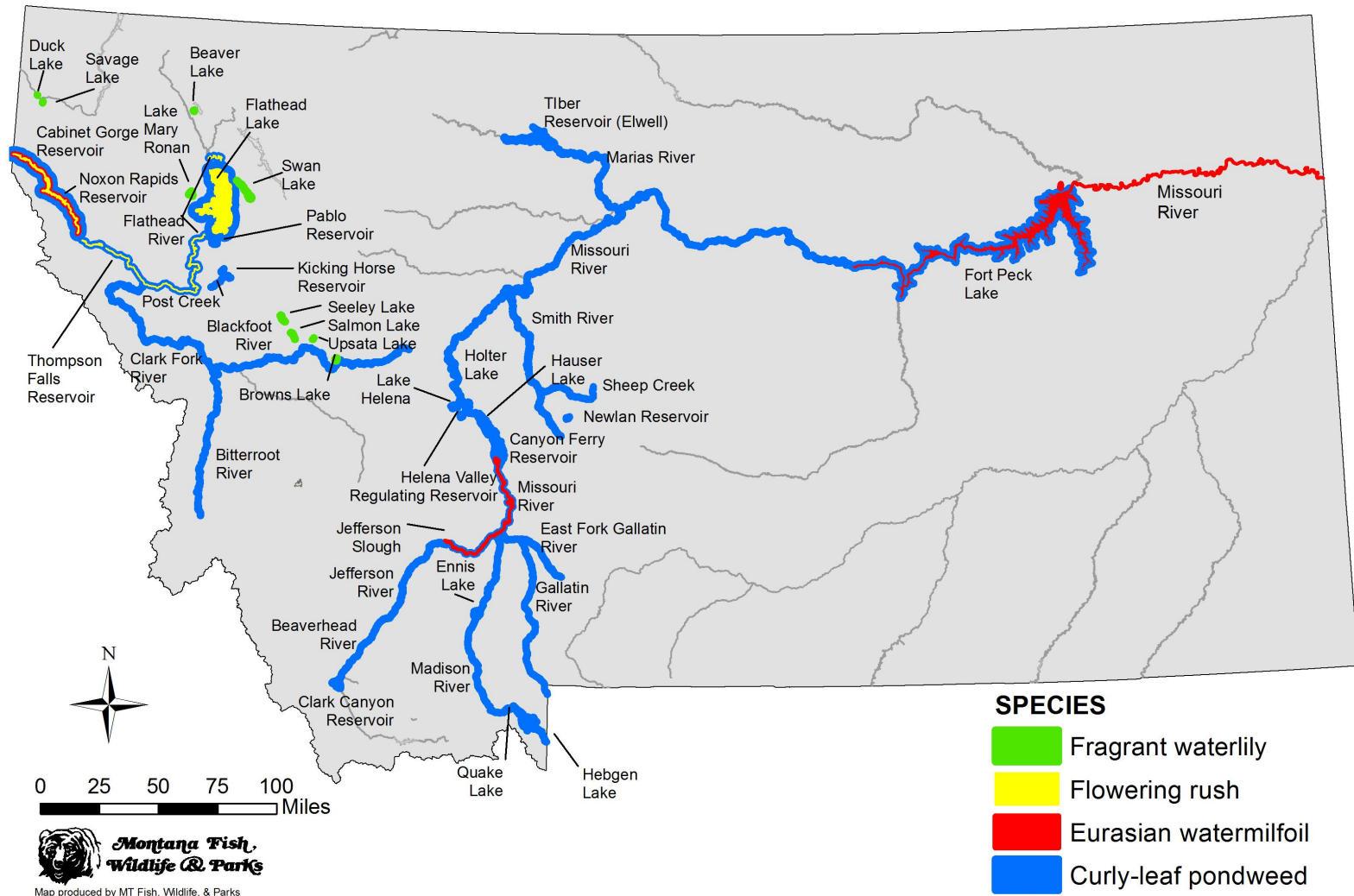
FWP AIS Program



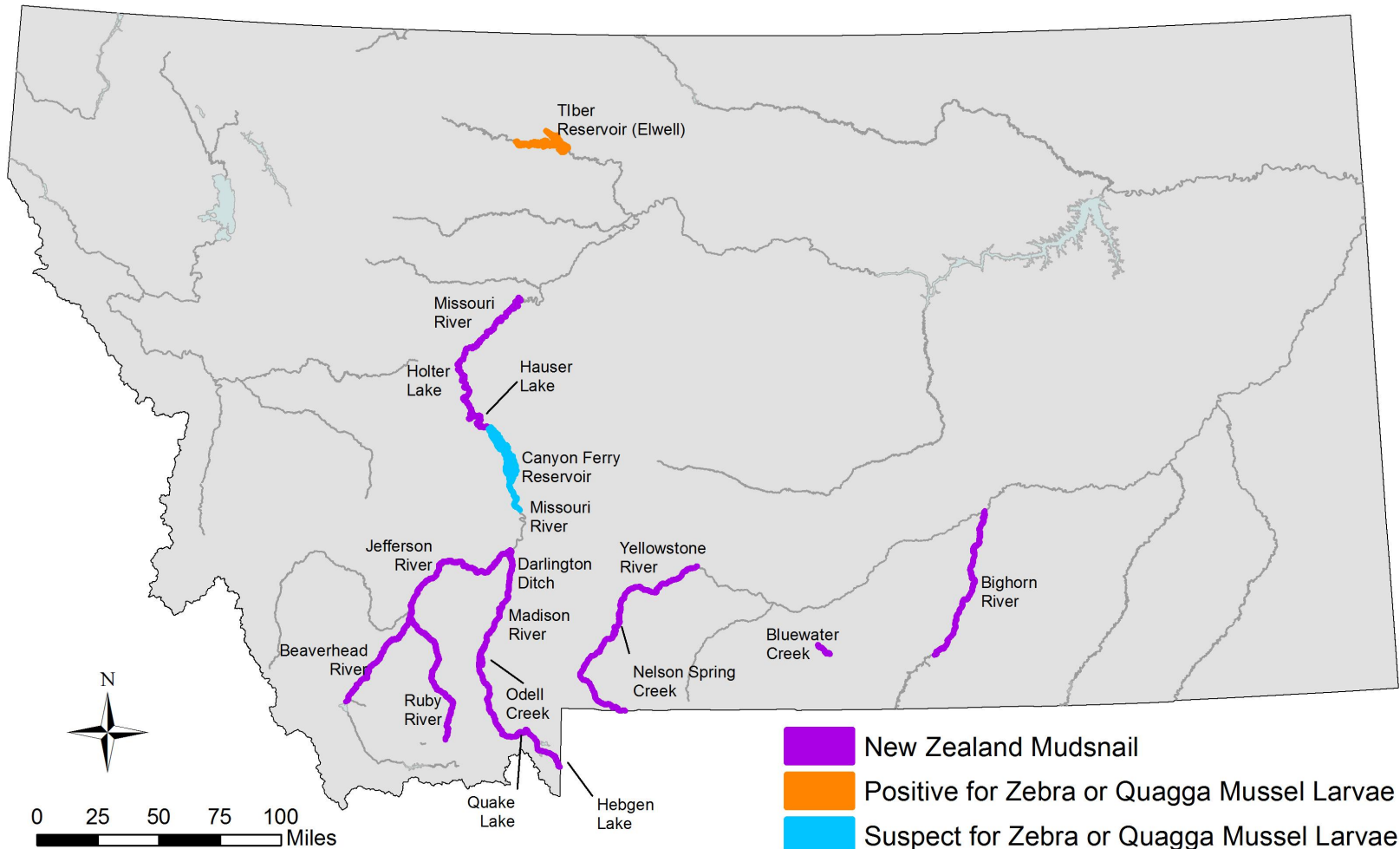
- Monitoring since 2002
- Outreach and Education since 2002
- Inspection Stations since 2004
- Mandatory stops since 2011



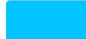


Aquatic Invasive Plant Locations in Montana - 2016



Aquatic Invasive Mollusk Locations in Montana - 2016



-  New Zealand Mudsnailed
-  Positive for Zebra or Quagga Mussel Larvae
-  Suspect for Zebra or Quagga Mussel Larvae



**Montana Fish,
Wildlife & Parks**

Map produced by MT Fish, Wildlife, & Parks



Invasive Mussels Detected

- BOR Tiber detection in October 2016
- FWP Tiber and Canyon Ferry
- Positive in Tiber Reservoir
- Suspect in Canyon Ferry Reservoir

ZEBRA MUSSEL



QUAGGA MUSSEL

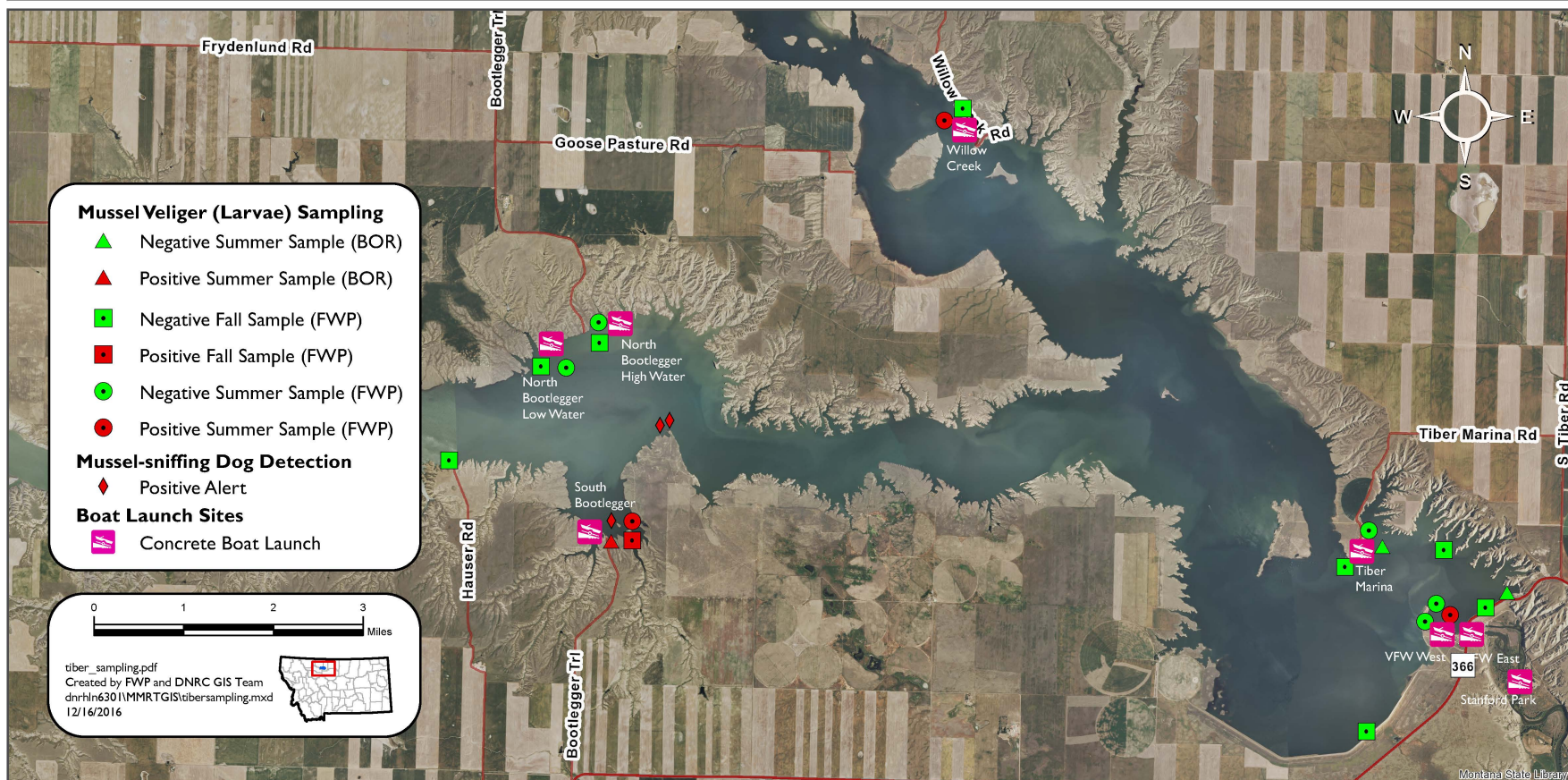


Detection at Tiber

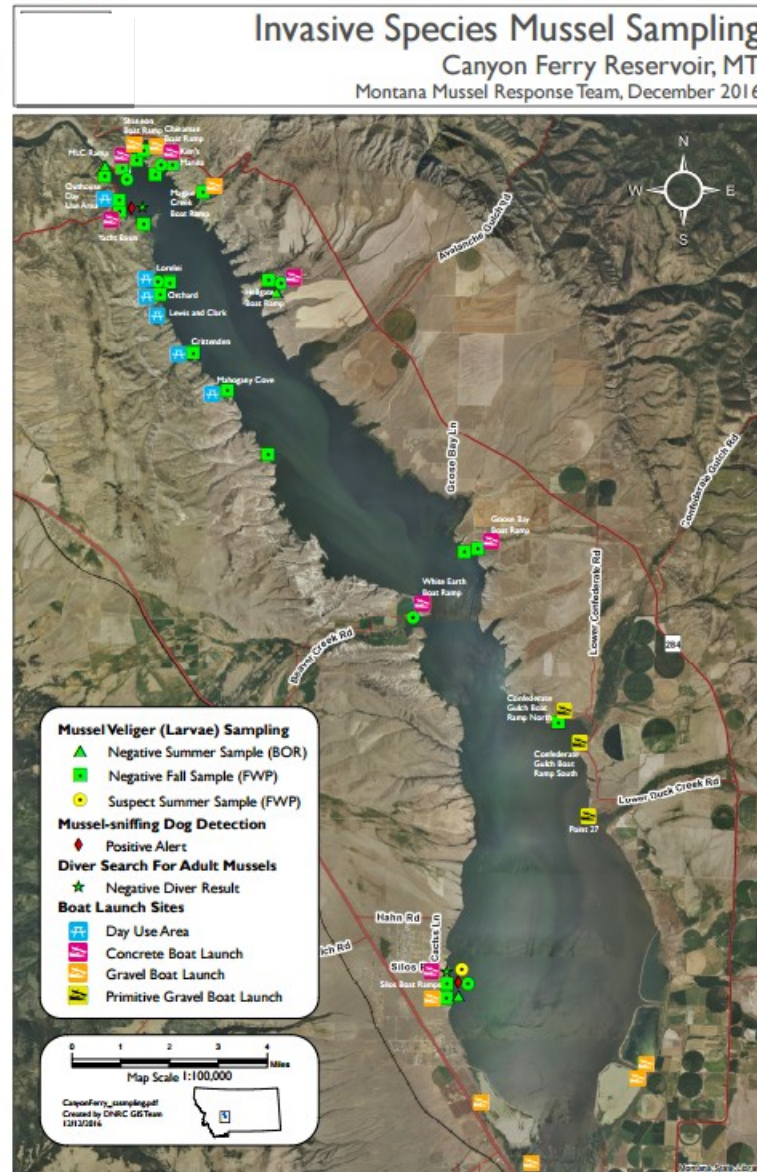
Invasive Species Mussel Sampling

Tiber Reservoir, MT

Montana Mussel Response Team, December 2016



Suspect Detection at Canyon Ferry

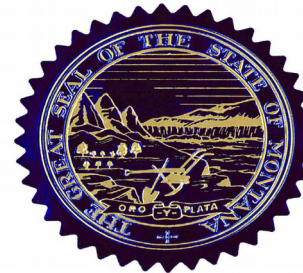


Natural Resource Emergency



- 2) All Directors of other Departments of the State of Montana shall fully cooperate with the Incident Management Organization.

This Order is effective immediately.



GIVEN under my hand and the GREAT SEAL of the State of Montana this 30 day of November, 2016.


STEVE BULLOCK, Governor

ATTEST:


LINDA MCCULLOCH, Secretary of State



MUSSEL RESPONSE TEAM – ICS

- Dual Command Structure
- Traditional ICS roles (Operations, Planning, Logistics, PIO, Liaison)
- Operations Chief broke Ops into Taskforce Teams:
 - Control/Containment
 - WIS
 - Decontamination
 - Drawdown
 - Sampling/Monitoring
 - Backlog
 - Current
 - Future



Mussel Response Team



BOATERS ★ ANGLERS ★ WATER USERS



You **MUST** stop at watercraft inspection stations

NO INSPECTION? DON'T LAUNCH!


CLEAN. DRAIN. DRY.

**MUSSEL
ALERT**

Proposed and Existing Watercraft Inspection and Decontamination Stations

- ✖ Inspection / Decontamination
- Class I Inspection Station*
- Class I Roving*
- ★ Class II Inspection Station**
- ◆ Partner Agency Inspection Stations
- [Red Outline] Statewide Defense Perimeter
- [Orange Outline] Columbia River Basin Defense Perimeter
- [Red Circle] Containment Zone

* Class I - full inspection and decontamination capability
 ** Class II - risk assessment screening, inspection and routing as needed

BoatInspectionStations_FY2016_Air_V7.pdf 3/21/2017
 Created by Montana Mission Response GIS Team
 W:\Projects\IS24_AirStateofEmergency\BoatInspectionStations_FY2018_Air_V7.mxd

Basemap Sources: Esri, HERE, DeLorme, USGS



MRT RECOMMENDATIONS – A FUNDING CHALLENGE

- ICS in a Fire World – Resource Availability
- FWP/DNRC Existing Budgets
 - Remaining 2M Biennial (existing program)
 - DNRC Grant Remaining
- Remaining Emergency Fund (not available past E.O.)
- Funding Request and Timing:
 - Governor Approval of Request
 - HB3 Special Appropriations
 - Federal Assistance (DJ Grant Match) and WRRDA
 - Joint FWP/DNRC Budget Appropriations



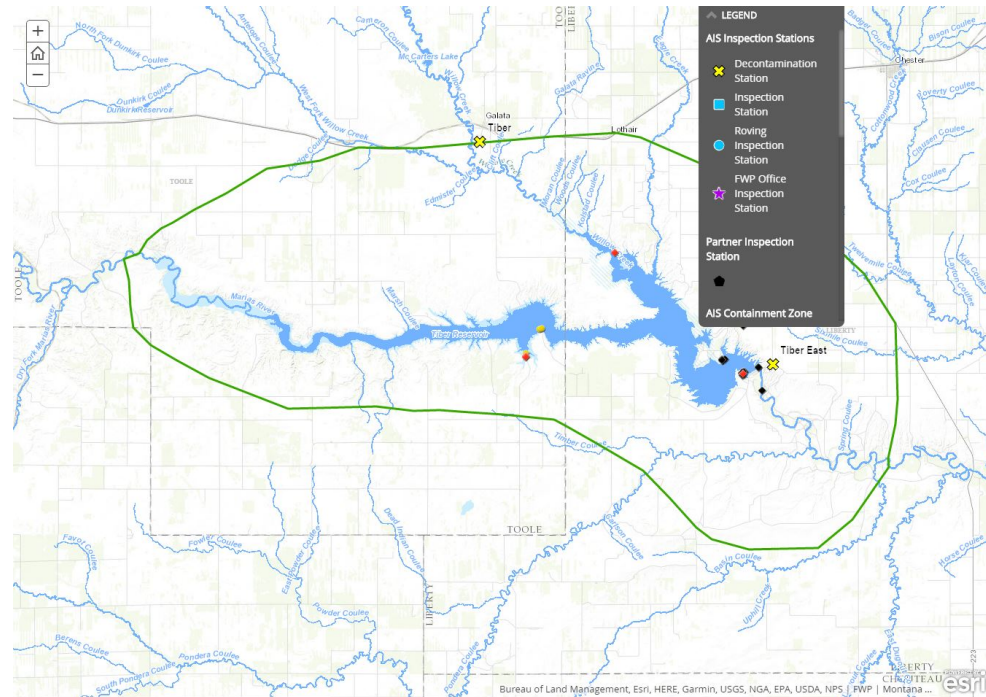
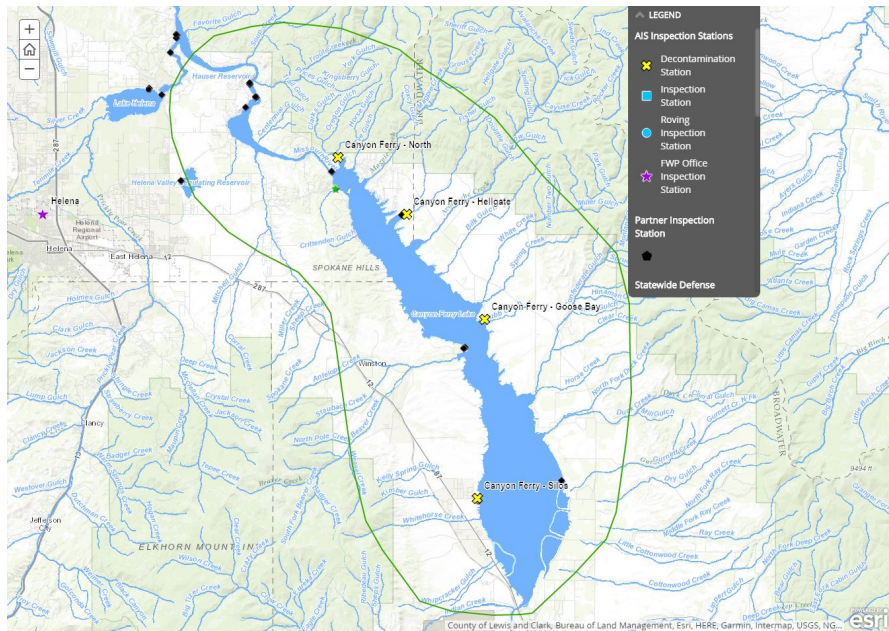
MUSSEL RESPONSE – IMPLEMENTATION

- Shift in Scope and Charge
- Similar ICS roles (operations, planning, logistics, PIO)
- Operations developed Taskforce Teams:
 - Decontamination
 - WIS
 - Sampling/Monitoring
 - Hiring
 - Enforcement
 - Education/Outreach
 - Rulemaking
 - Logistics



A group of approximately 15 people, including several in law enforcement uniforms, are seated around a large U-shaped conference table in a meeting room. They are engaged in a discussion, with some looking at laptops and others at documents. The room has white walls, a clock, and several large charts or posters displayed on the wall. A whiteboard on the left lists 'Supply List' and 'IT' items. The table is cluttered with papers, notebooks, and water bottles. The atmosphere appears to be a formal meeting or training session.

Mussel Containment Zones



New Laws & Rules

- Mandatory inspection prior to launch
 - Out-of-state
 - Continental Divide
- Decontamination requirements
- No lake or river water transport
- Ramp restrictions
- Local boater program



Enforcement

- FWP will be there to help, but all of Montana will rely on you to adhere to the rules and to help with enforcement.
- Call **TIP-MONT** if you witness any violations
- Enforcement efforts will be increased across the state

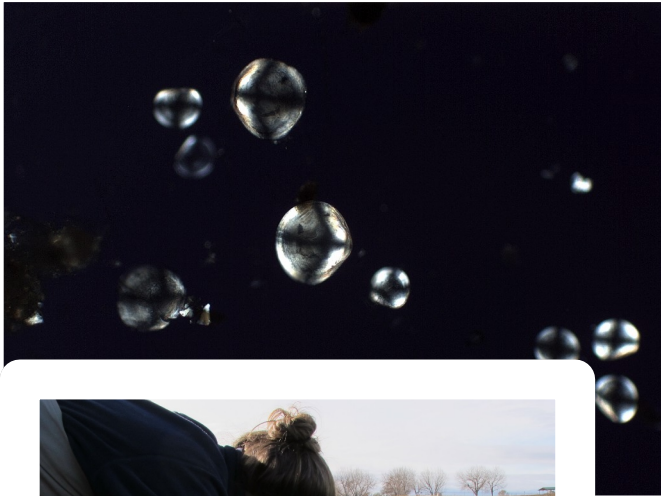


What is the Local Boater Program

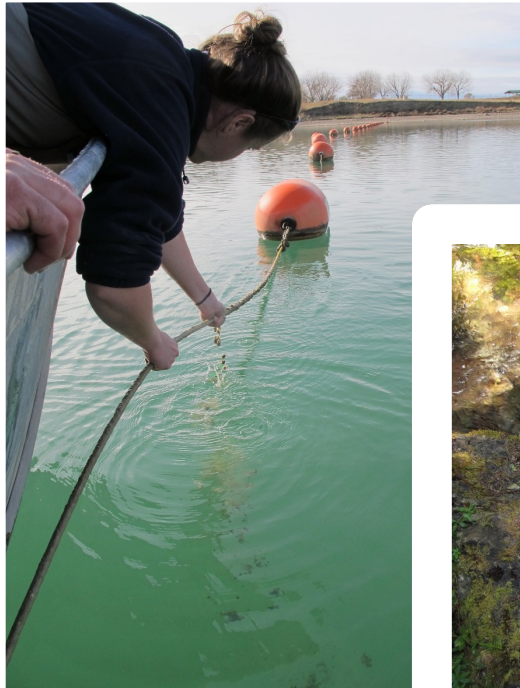
- The program is applicable only for Canyon Ferry or Tiber Reservoirs
- It will allow you to avoid the need for decontamination if your next boating trip is on the same waterbody.
- The purpose of the program is to decrease volume at the decontamination stations to allow FWP to focus on boats traveling elsewhere.



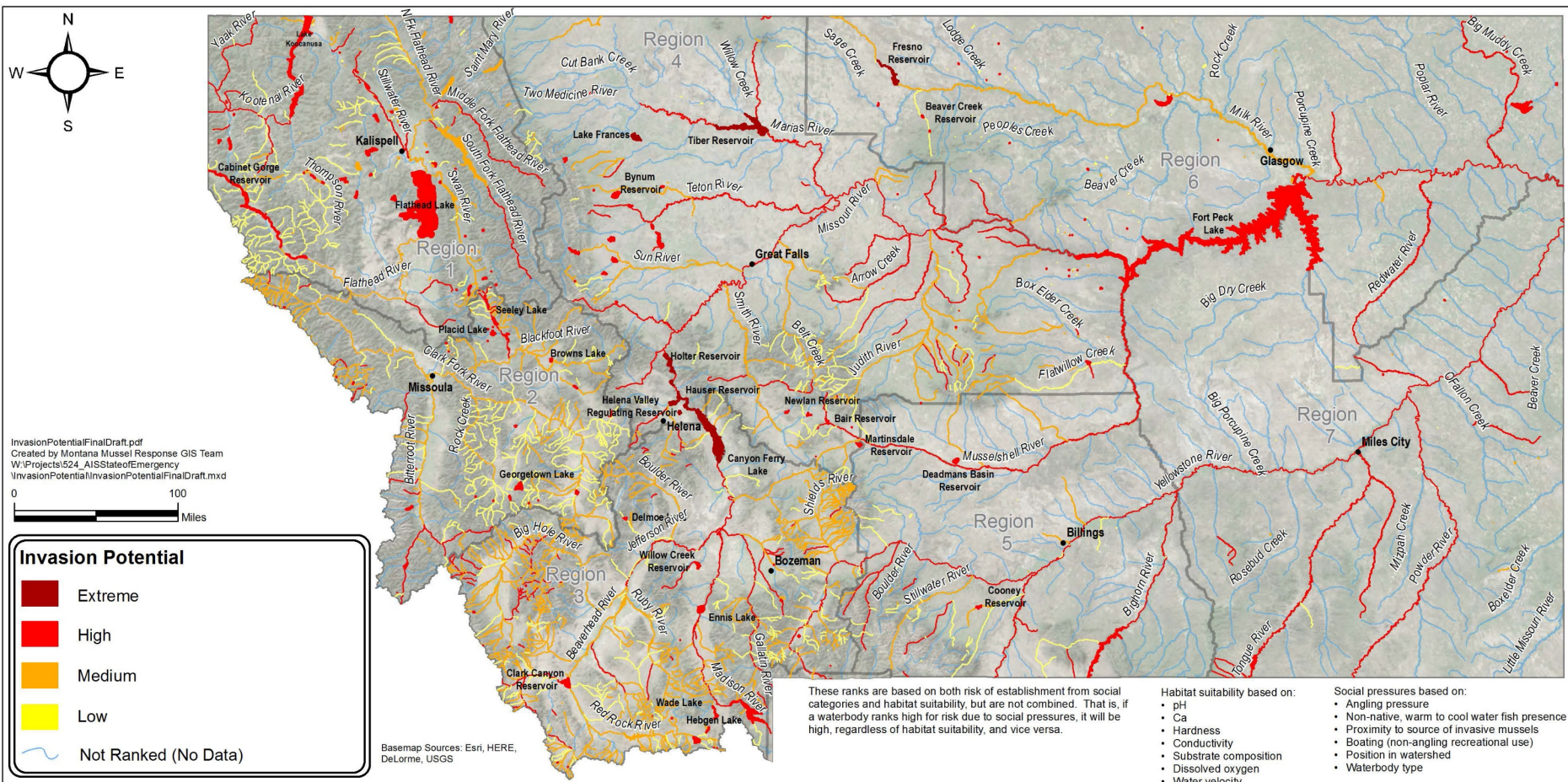
FWP AIS Monitoring Enhancements



- From 610 to over 1500 samples
- From 180 to over 200 waterbodies
- Prioritized sampling/ lab turn-around
- Increased Lab Capacity



Dreissenid Mussel Invasion Potential



MUSSEL RESPONSE – LESSONS LEARNED

- Communication/Involvement was one of biggest challenges
- Public, Partner, Legislative support critical
- Recognize Inherent “Elastic” nature of staffing and impacts
- Integration with Program/Agencies during and post response
- I.C.S. Works
 - Training required for Responders
 - Training Required for those who interact



YOU

are the first line of defense in preventing
the spread of aquatic invasive species.


CLEAN. DRAIN. DRY.

THANKS! MONTANA'S DEPENDING ON YOU!



CLEAN. DRAIN. DRY.



The Montana Department of
**Natural Resources
& Conservation**



***Montana Fish,
Wildlife & Parks***