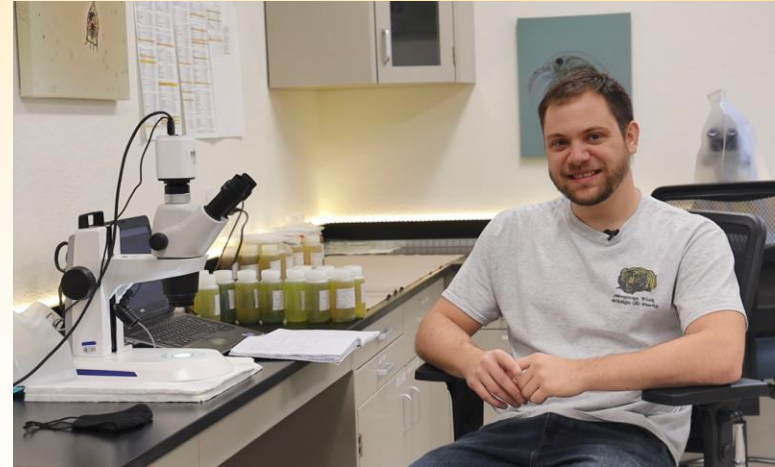


# Montana AIS Early Detection Update

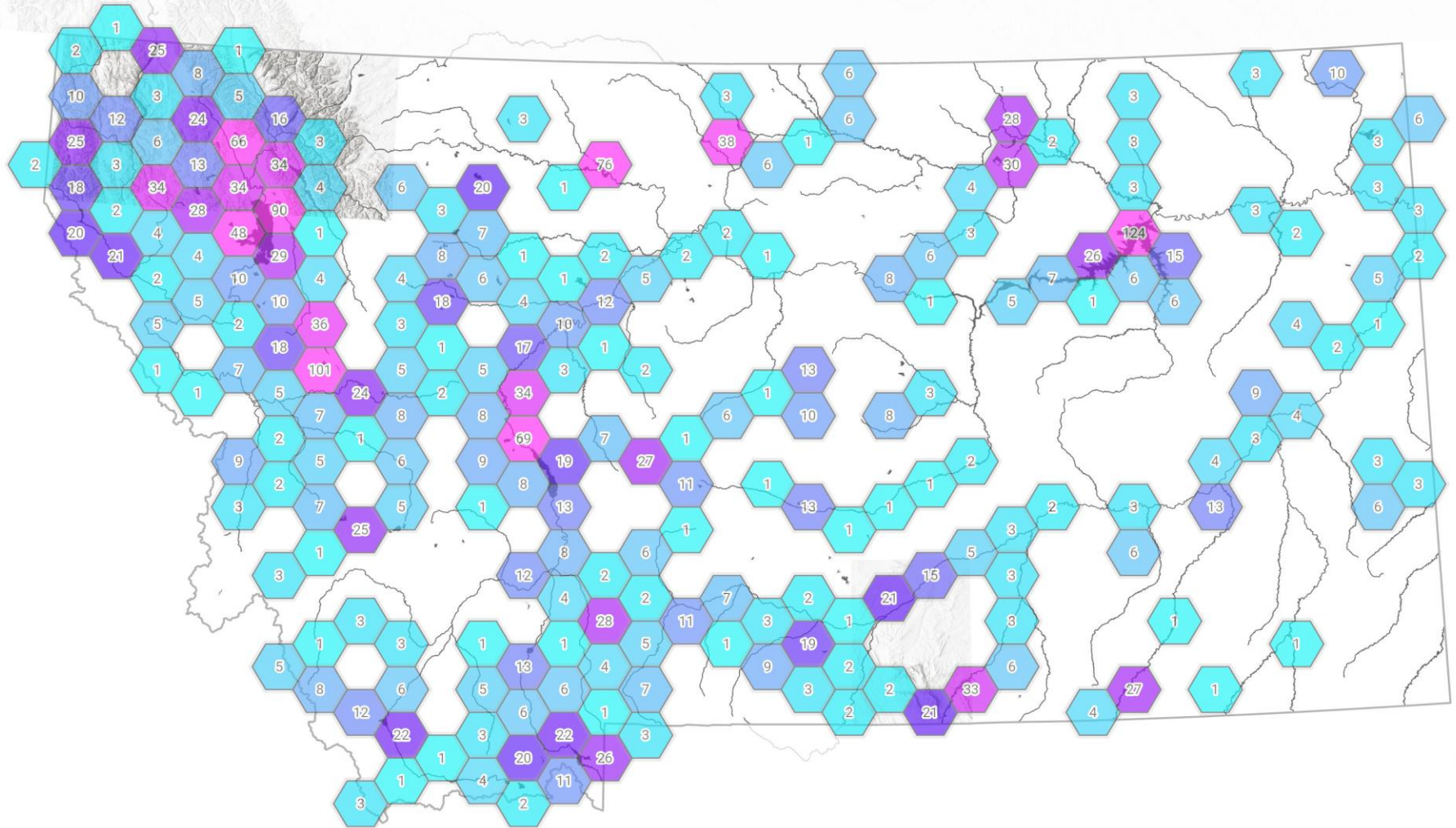


# Early Detection Survey

- 150 samples so far this season
- Expanded partner sampling and survey.
- Early Detection training for partners and the public.
- Expanding eDNA sampling.



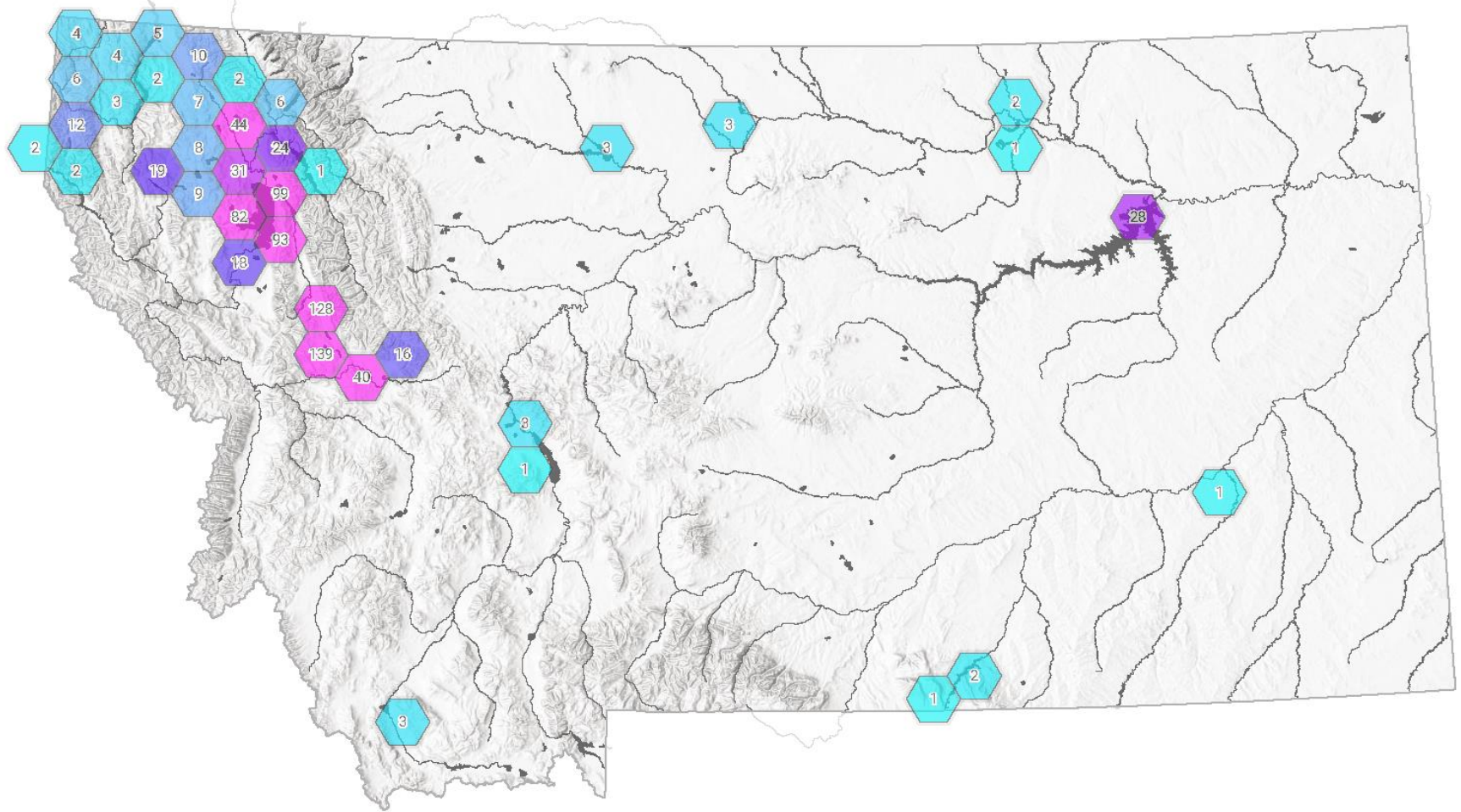
2022 FWP Plankton Net Survey Location



Plankton Net AIS Sample Location Density



2022 Partner Agency AIS Plankton Survey locations



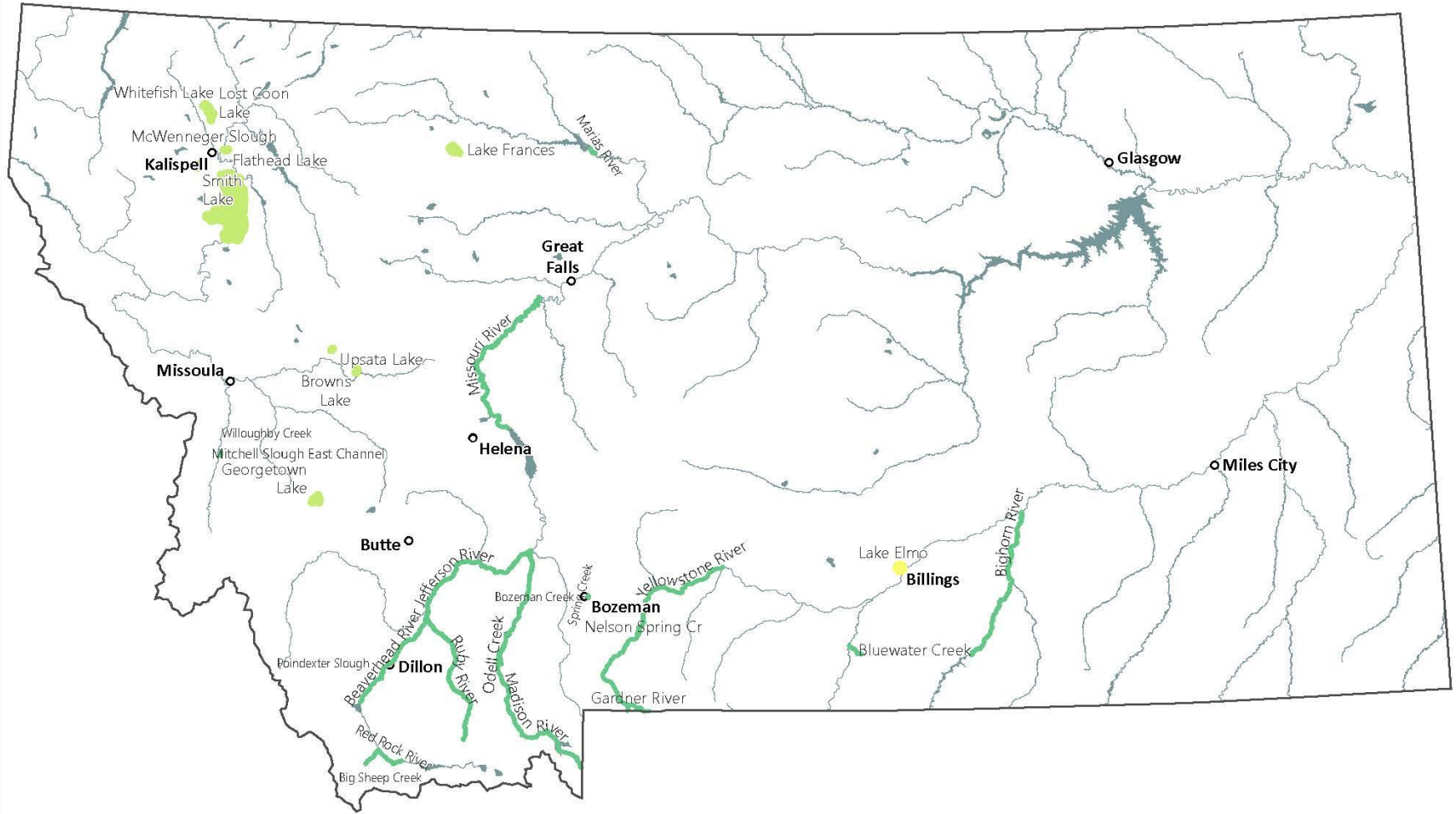
### Partner Agency AIS Sample Density



# New Detections 2023

- Mystery Snail: Finley Point, Flathead Lake.
  - No known mystery snail populations in MT
- New Zealand Mudsnail: Silverbow Creek, Warm Springs.
  - Clark Fork Headwaters





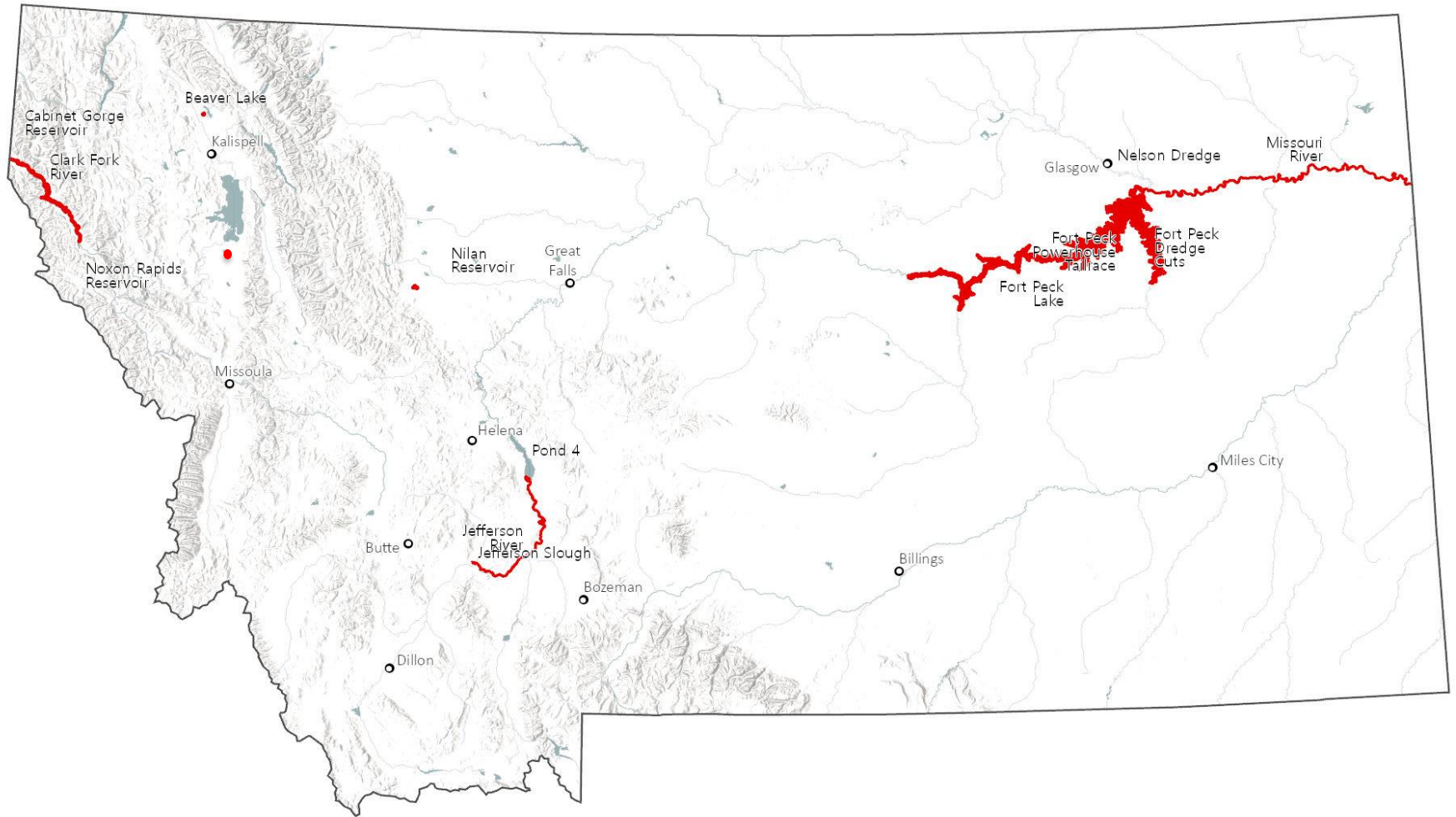
## AIS Species

- New Zealand Mudsnailed
- Asian Clam
- Faucet Snail

Distribution data based on survey location data collected by Montana Fish, Wildlife & Parks and partner agencies.

# Eurasian Watermilfoil

A wide-angle photograph of a body of water almost completely covered by Eurasian Watermilfoil. The plants are dense and have a brownish, dried appearance. The water is dark and reflects the surrounding environment. In the background, there is a shoreline with trees and a small structure, possibly a boat or a pier.



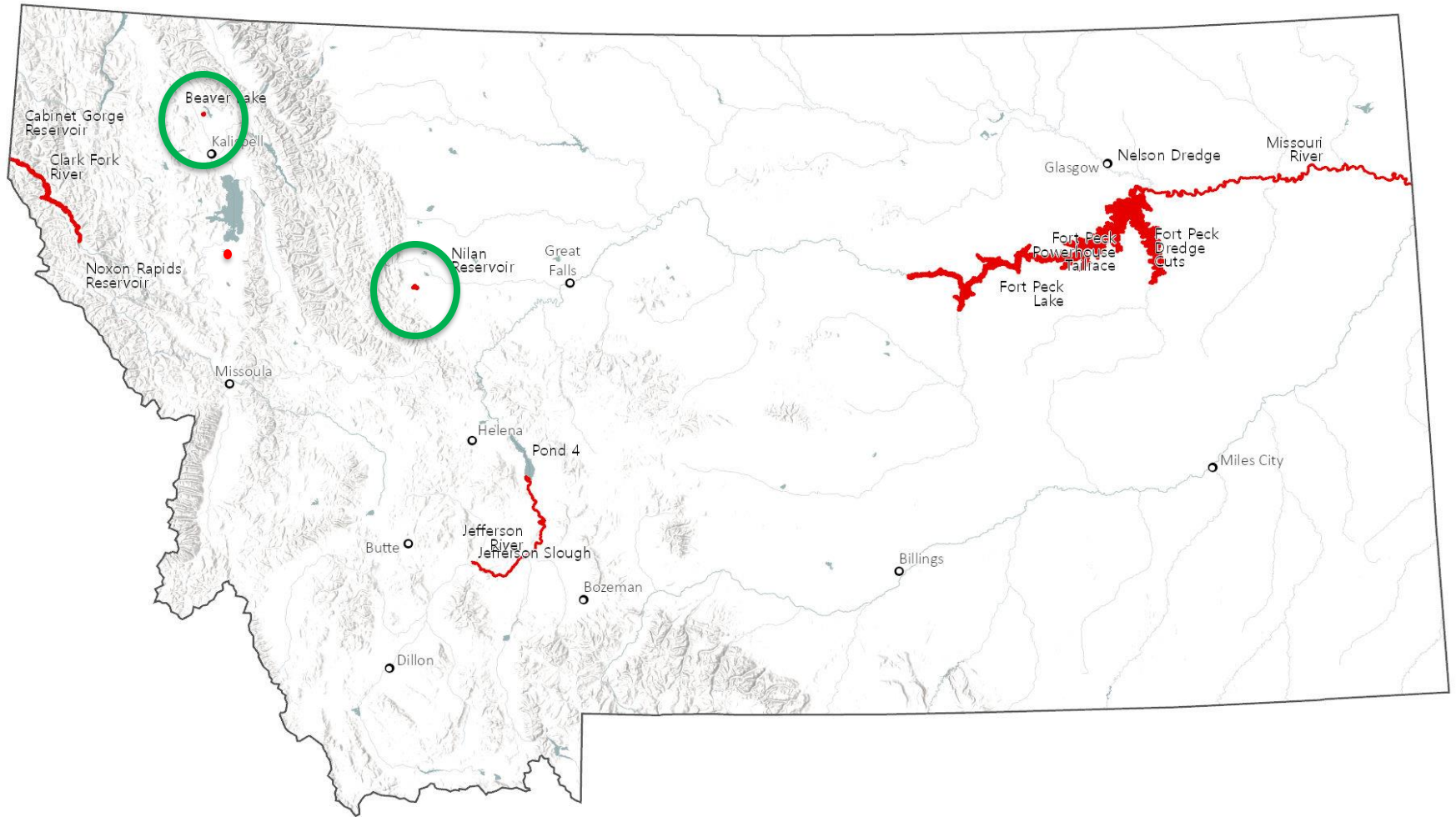
## AIS Species

 Eurasian watermilfoil



Map Produced by: RCA  
Geographic Data Services  
ISR 51731 1/20/2022



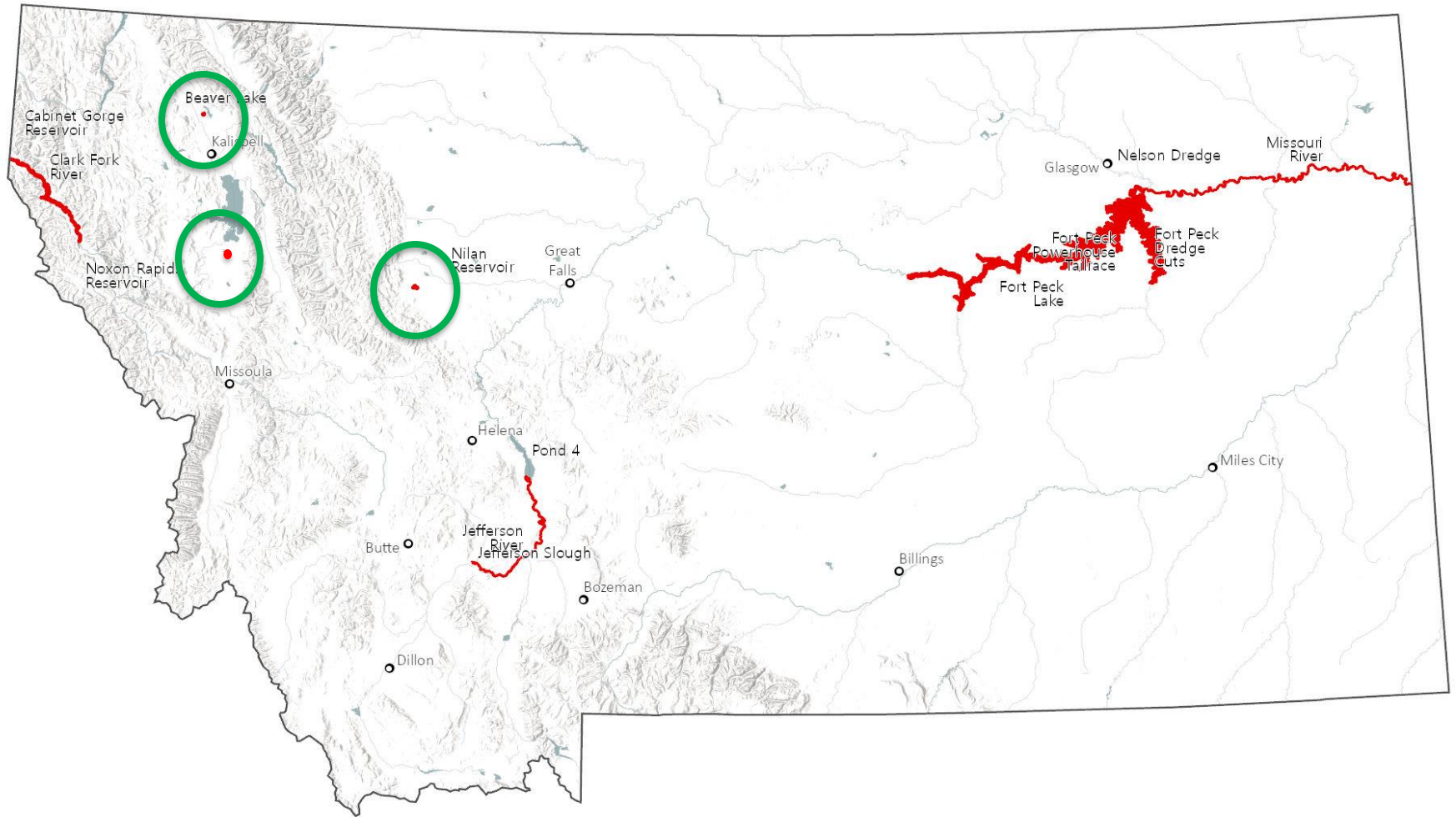


## AIS Species

 Eurasian watermilfoil



Map Produced by: RCA  
Geographic Data Services  
ISR 51731 1/20/2022



## AIS Species

 Eurasian watermilfoil



Map Produced by: RCA  
Geographic Data Services  
ISR 51731 1/20/2022

# AIS Early Detection Training

- June 5-6, Flathead Bio Station.
- June 7: CSKT
- June 13: Miles City, Central and Eastern Invasive Species Team
- Other dates TBA.



The Flathead Lake Biological Station  
and MT Fish, Wildlife & Parks  
Presents:

An **AIS Early Detection and Monitoring Workshop**  
June 5 & 6, 2023 10-4pm  
Flathead Lake Biological Station  
32125 BioStation Lane  
Polson, MT. 59860  
Free and open to all!

An aerial photograph showing two individuals wading in a shallow, rocky stream. One person is standing in the water, while the other is partially submerged, possibly using a net or sampling equipment. The surrounding area is rocky and grassy.

**CEMIST**  
CENTRAL AND EASTERN MONTANA  
INVASIVE SPECIES TEAM

**SAVE THE DATE!!**

**AIS Monitoring Training**

June 13,  
2023

A collage of images related to AIS monitoring training. It includes a person in a red jacket wading in a stream, a close-up of a plant stem, a close-up of a mussel shell, and a central image of a stream flowing over rocks.

MONTANA FWP

PROTECT OUR  
WATERS

Clear

[FWP.MT.gov/AIS](http://FWP.MT.gov/AIS)

