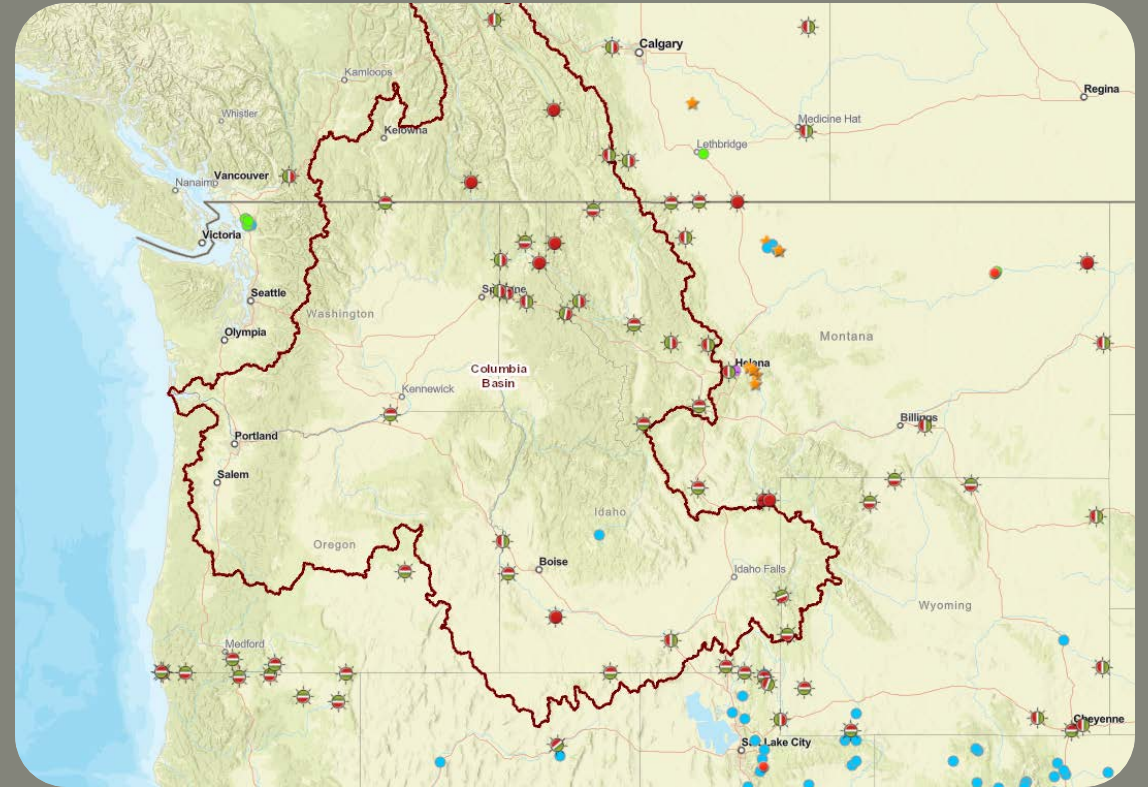


# USACE WRDA UPDATE-

Watercraft Inspections Stations 2018 cost-share  
4.172 million on a 50:50  
2017 appropriate funds

Monitoring 2018 Cost-Share  
691K on a 50:50  
Mix of 2016, 2017, and 2018 appropriate  
funds

Remaining funds from 2018 is roughly 4.8 million



*"The views, opinions and findings contained in this report are those of the author(s) and should not be construed as an official Department of the Army position, policy or decision, unless so designated by other official documentation."*



US Army Corps  
of Engineers®



NOTE  
TAMPER GATE

# UPDATE CONT:

Rapid Response Cost-Share

Working through ESA and NEPA

Schedule completion December 31-2018

NEPA on schedule (85%); but can't be finalized until ESA consultation is complete.

ESA BA for Rapid Response processed thru USACE on Friday June 1 and in the mail to the Agencies I will be providing the BA, Weblink on maps etc., and projected schedule to PSMFC, states, etc. in the upcoming week.

-Thanks to all for reviewing the BA portions and helping in developing, providing input etc.

*"The views, opinions and findings contained in this report are those of the author(s) and should not be construed as an official Department of the Army position, policy or decision, unless so designated by other official documentation."*



US Army Corps  
of Engineers®

