

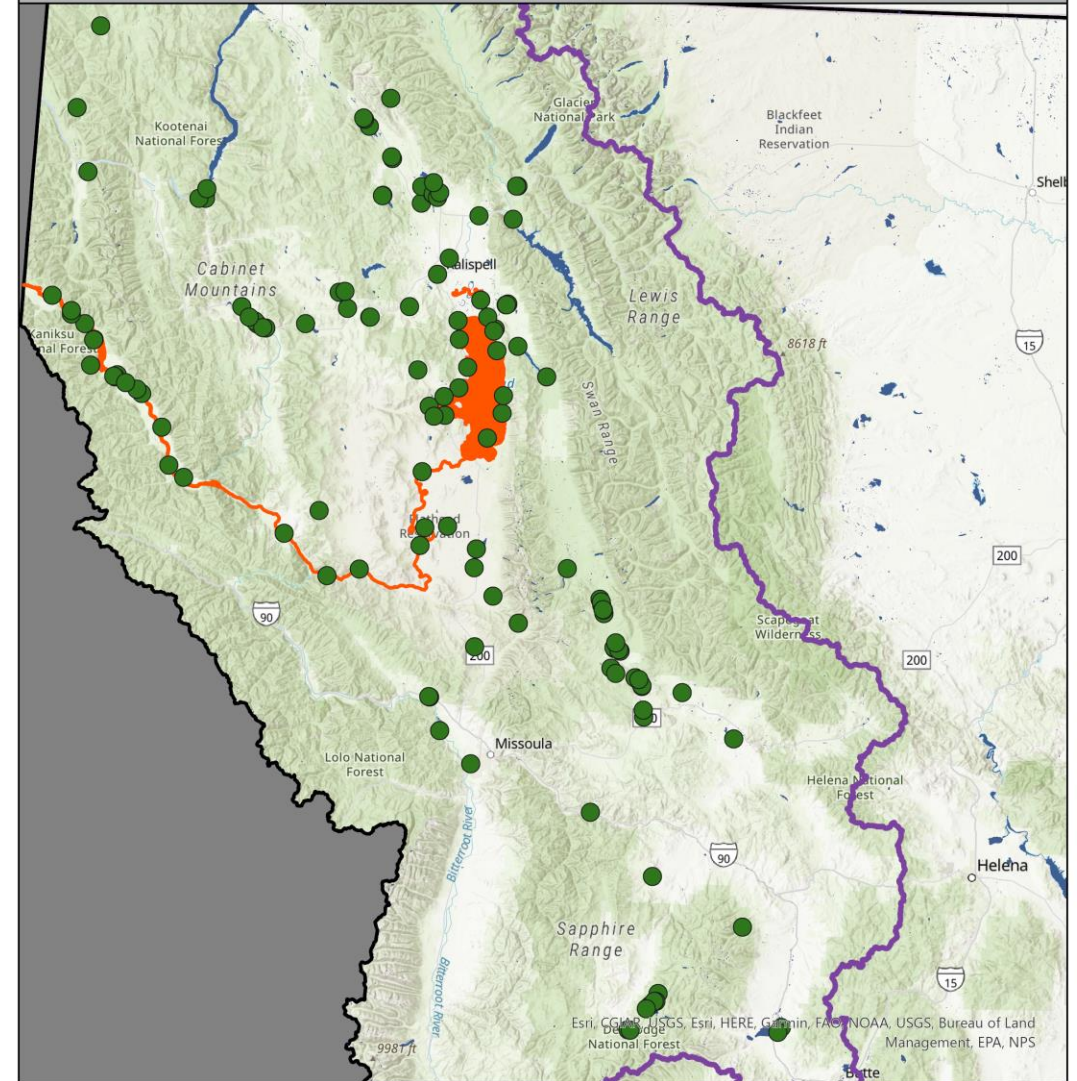
Flowering Rush 2022 Update

Montana Fish, Wildlife & Parks efforts within the Columbia River Basin



2022 Sampling Efforts

- Aquatic plant sampling at high-risk sites alongside other AIS sampling
 - Surveyed sites on 63 waterbodies
 - Visited about 158 sites
- Shoreline surveys for flowering rush on some but not all planned waters



● Plant Sampling Site
■ Water with flowering rush
— Continental Divide

Map Produced by: AIS Bureau
Craig McLane
FlowerRushSampling2022 & Produced 12/1/2022

Area of Interest

0 15 30
Miles

Credits: Sampling data from Montana Fish, Wildlife & Parks, Helena, MT. Basemap from ESRI.

2022 Flowering Rush Early Detection Plans vs Reality

Shoreline Surveys Completed

- Church Slough
- Foy's Lake
- Hungry Horse (about 24 mi shoreline)
- Kicking Horse Reservoir
- McWenegar Slough

High Risk Site Sampling Only

- Cabinet Gorge Reservoir
- Echo Lake
- Flathead Lake
- Flathead River above lake
- Hubbart Reservoir
- Jette Lake
- Lake Blaine

High Risk Site Sampling Only (continued)

- Lake Koocanusa
- Lake Mary Ronan
- Little Bitterroot Lake
- Nine Pipes Reservoir – Couldn't get permission to use boat on lake
- Noxon Rapids Reservoir
- Pablo Reservoir – Couldn't get permission to use boat on lake
- Swan Lake
- Thompson Falls Reservoir
- Whitefish Lake

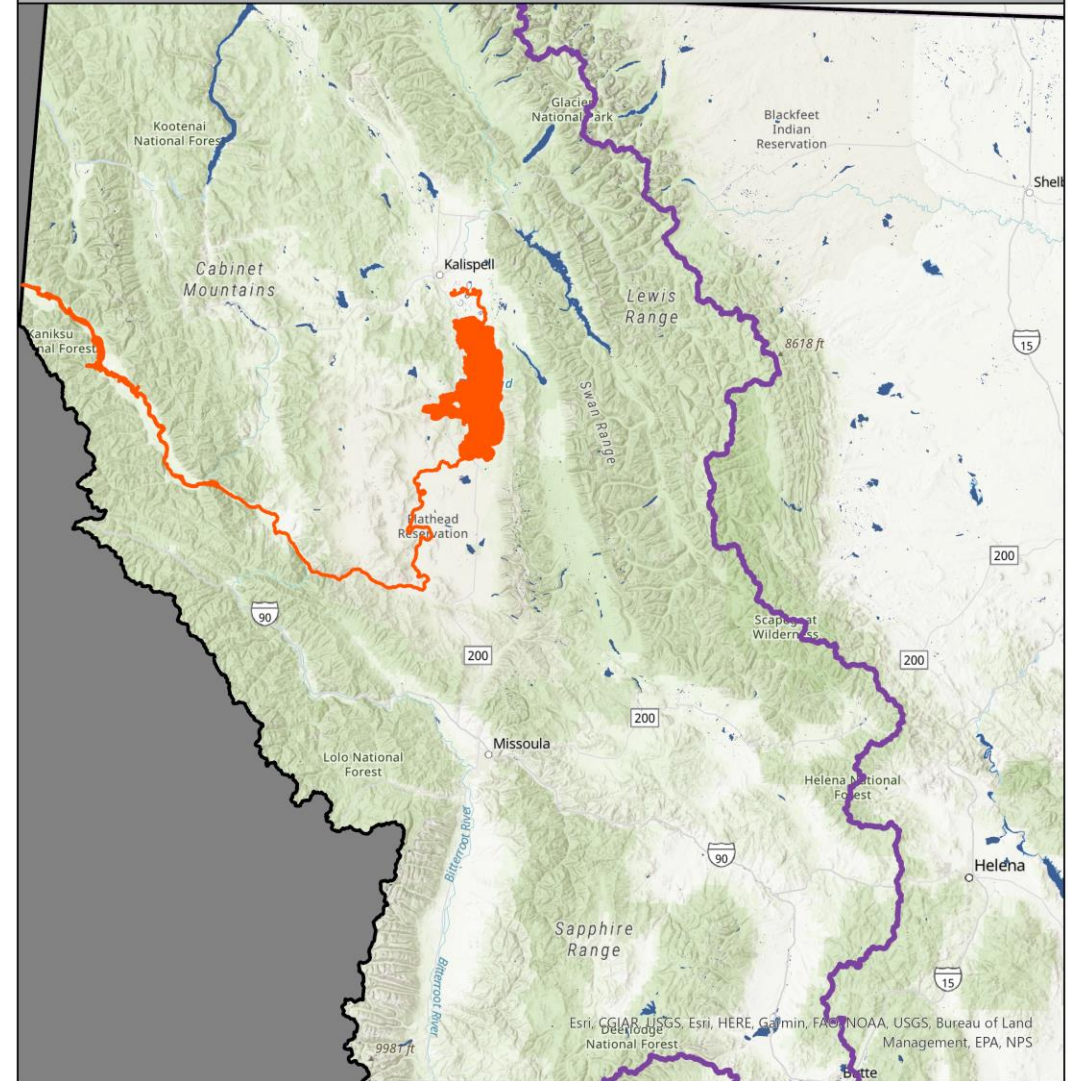
No Sampling

- Egan Slough - Couldn't get Access
- Irrigation system around Flathead Valley – Time restraint



Current Flowering Rush Distribution in Montana like 2021

- Flathead River above Flathead Lake
- Church Slough
 - Newly documented for 2022 (always been there?)
- Flathead Lake
- Flathead River below Flathead Lake
- Clark Fork River below confluence with Flathead River
- Thompson Falls Reservoir
- Noxon Rapids Reservoir
- Cabinet Gorge Reservoir



Water with flowering rush
Continental Divide



Map Produced by: AIS Bureau
Craig McLane
FlowerRushSampling2022 & Produced 12/1/2022

Credits: Sampling data from Montana Fish, Wildlife & Parks, Helena, MT. Basemap from ESRI.



Contact Info

Craig McLane

AIS Early Detection and Monitoring Coordinator

(406) 444-1224

cmclane@mt.gov

