



Washington Department of  
**FISH & WILDLIFE**

# Ballast Water and Biofouling Section

PBWWG Update: April 2024

---

Amanda Newsom, PhD, Ballast Water and Biofouling Section Lead &  
Justin Bush, Aquatic Invasive Species Policy Coordinator

# Progress Report: Spring 2024



Changes, New Staff, and Hiring Forecast



Quarterly Data Reports



Public Outreach



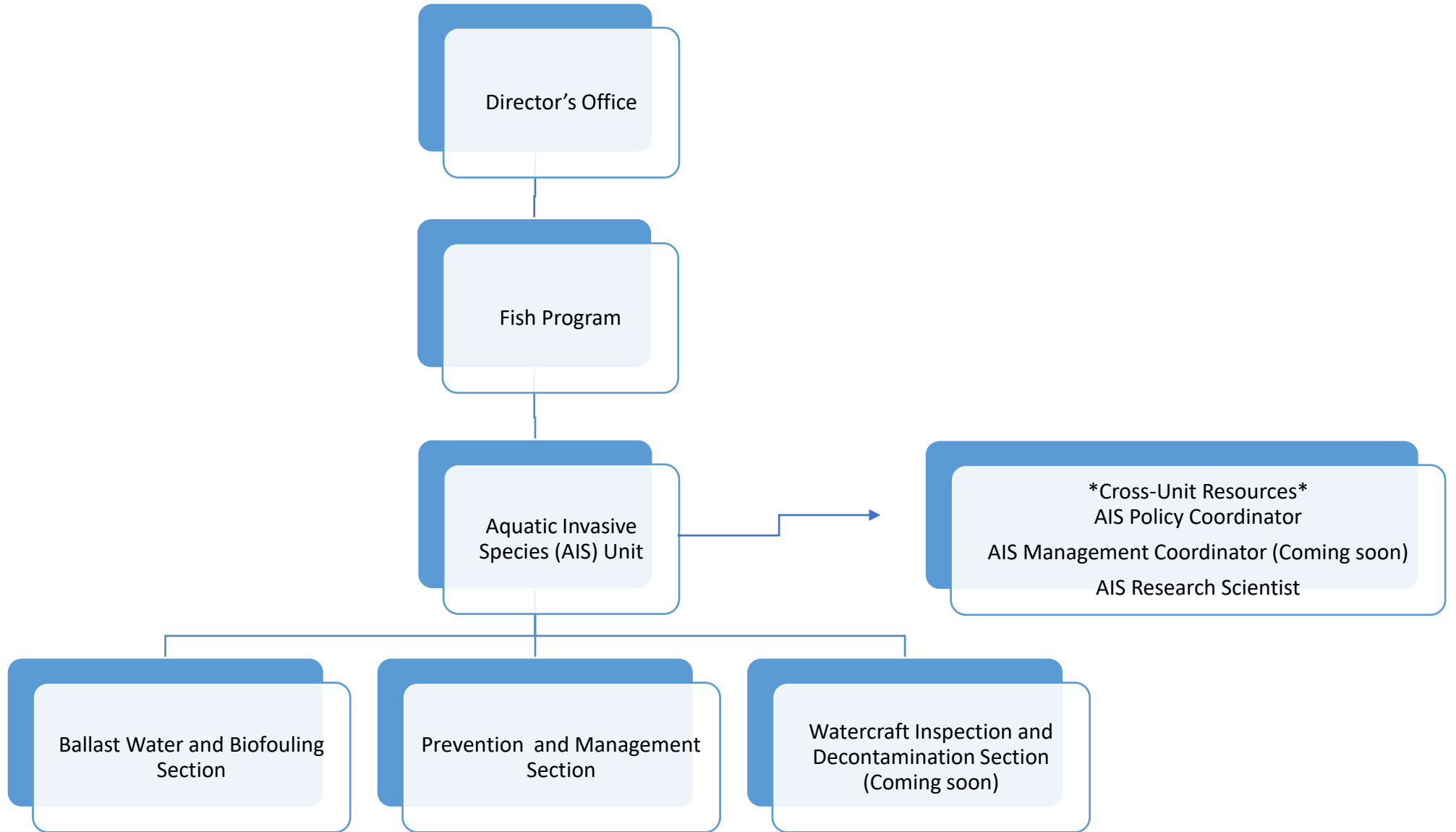
Washington Ballast Water Working Group



# Staff and Hiring

---





Justin Bush  
AIS Policy  
Coordinator

Amanda  
Newsom  
Section Lead

Keith Strieck  
Vessel Inspector

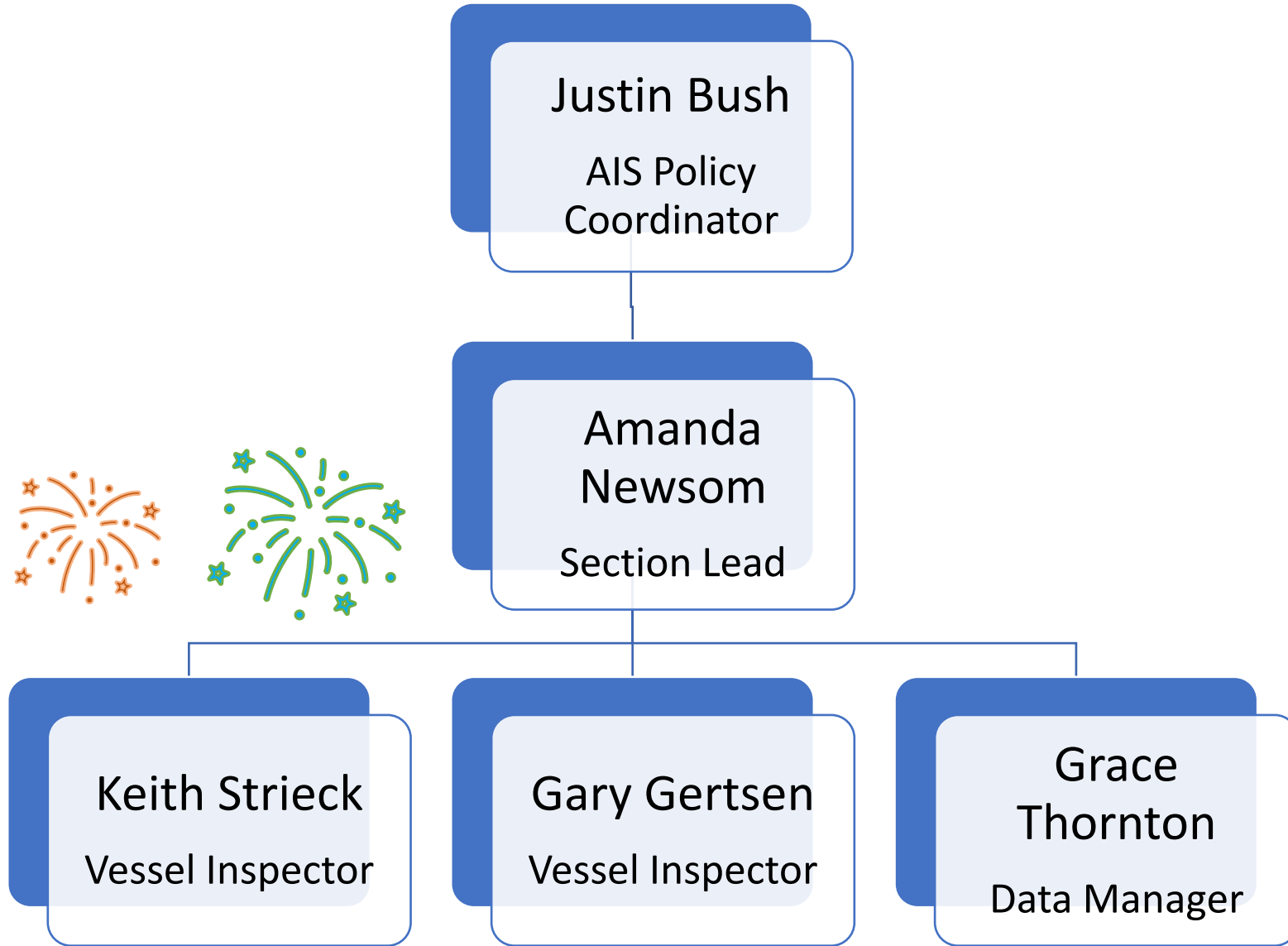
Gary Gertsen  
Vessel Inspector

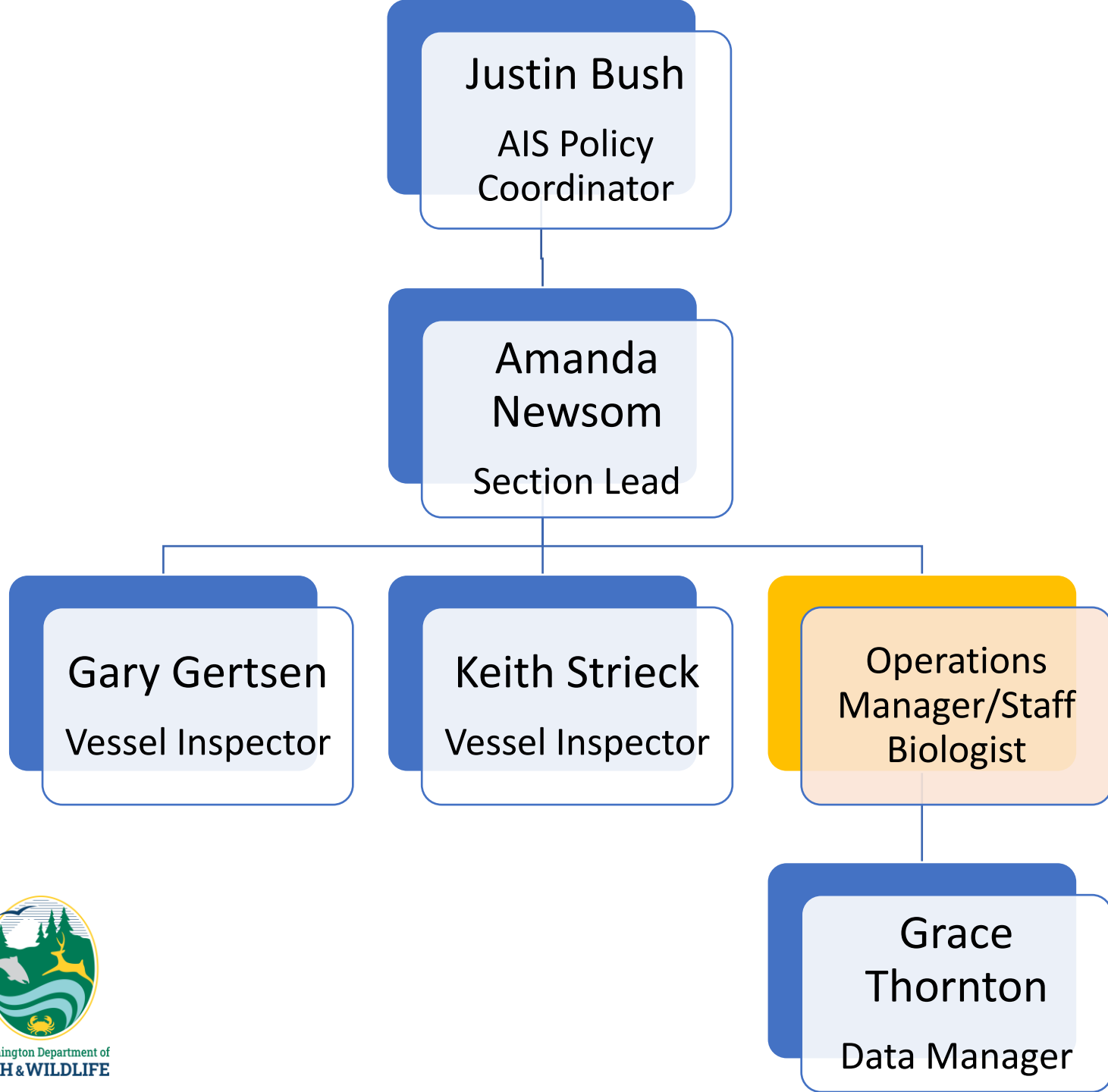
Grace Thornton  
Data Manager





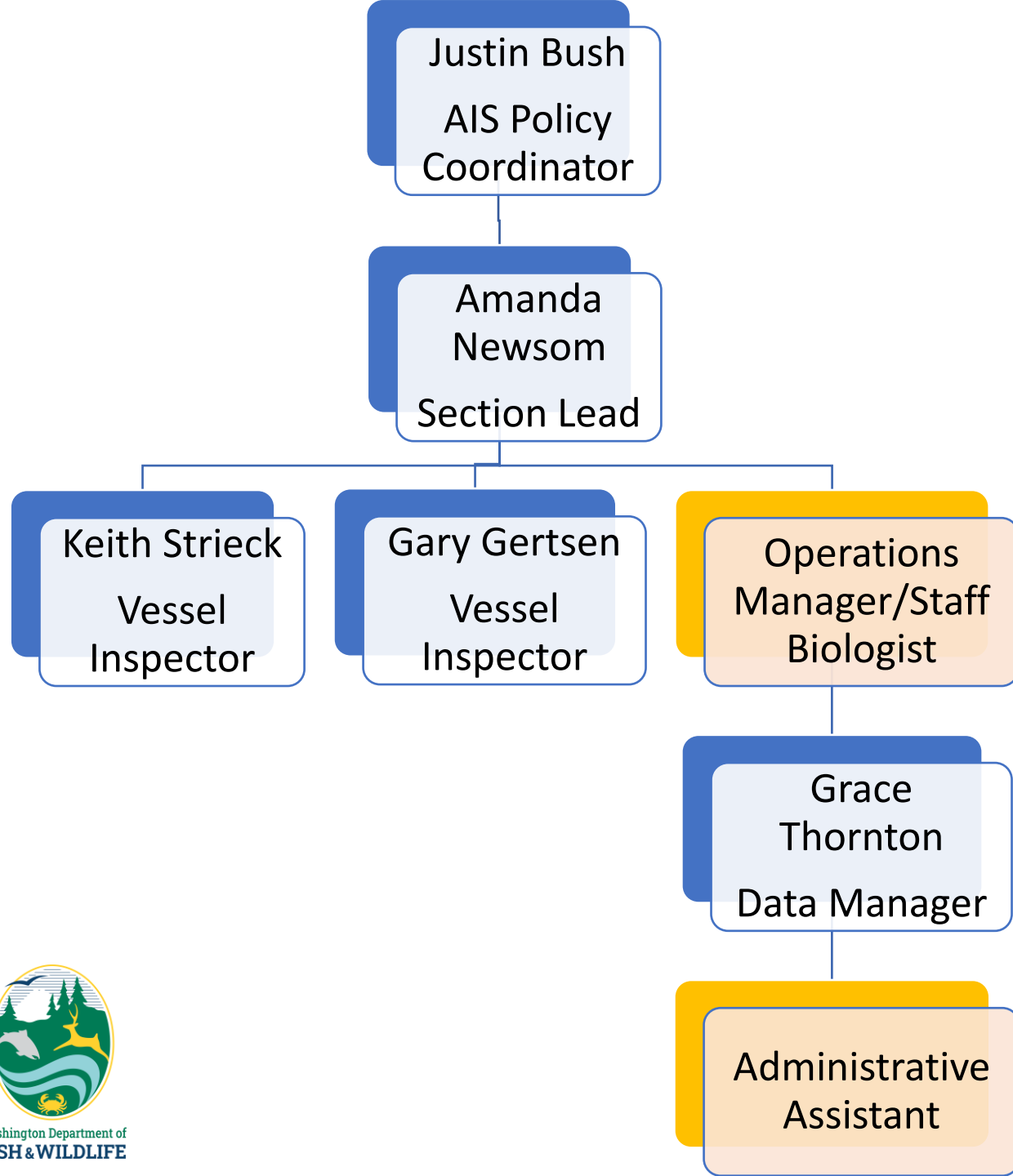
20 Years!





- Full-time, permanent
- Support Section Lead with Daily Operations
- Support Inspection Program
- Supervise Data Program
- Biological Sampling
- Outreach

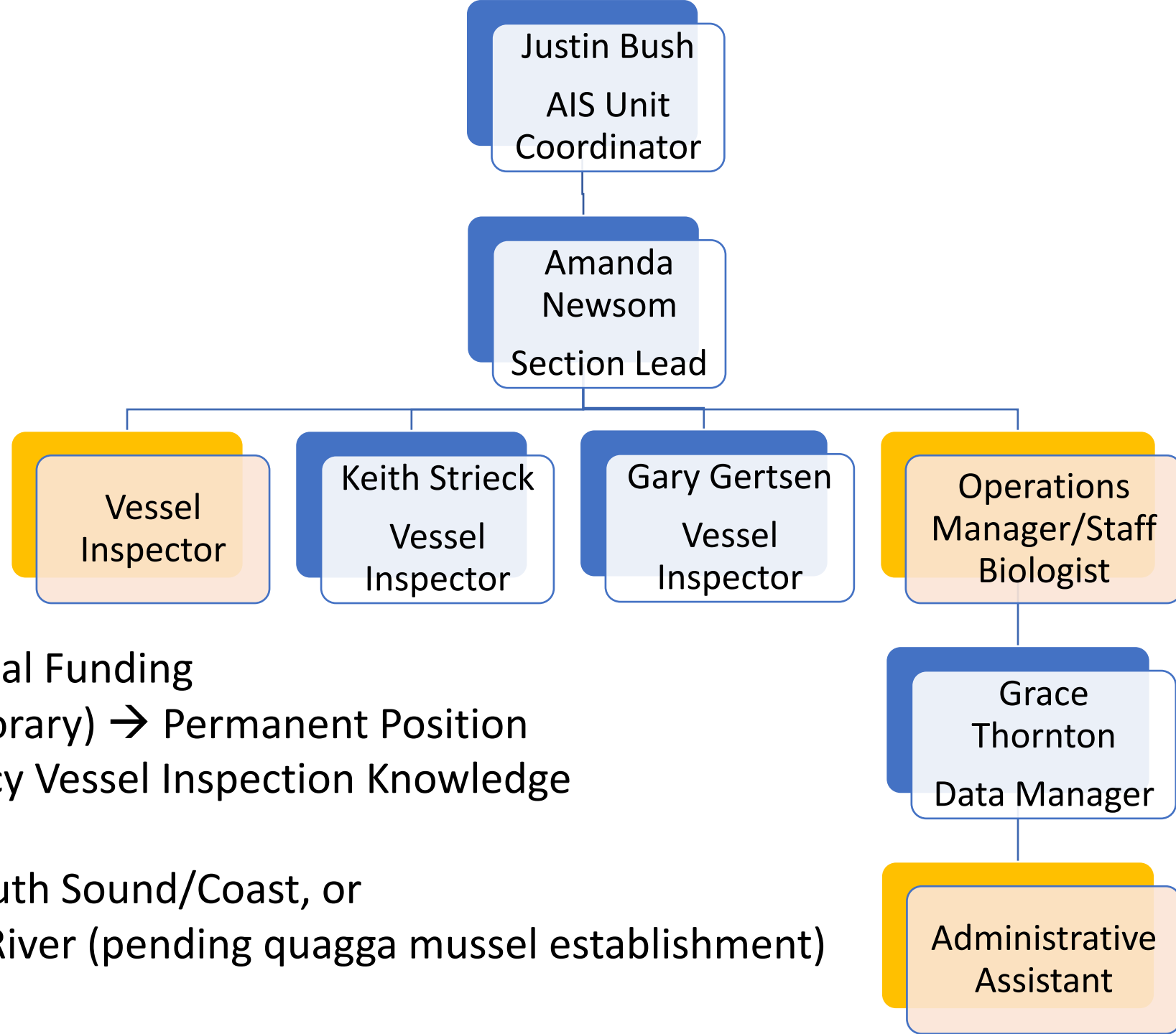




- Full-time, permanent
- Shared position with Prevention Section
- Assist Sections with Data Entry
- Field and Forward Public Inquiries
- Support Sections with Equipment Ordering and Tracking







- Seeking External Funding
- Project (Temporary) → Permanent Position
- Preserve Legacy Vessel Inspection Knowledge
- Focal Areas:
  - Seattle/South Sound/Coast, or
  - Columbia River (pending quagga mussel establishment)



# Data Program Update: Quarterly Reports

---



# Ballast Water Quarterly Report



Washington  
Department of  
**FISH &  
WILDLIFE**

Data source		2023						
		First	Second	Third	Fourth	Total	Avg	Stdev
Total arrivals	Arrivals	792	986	1010	975	3763	941	100
Noncompliant arrivals	Arrivals	25%	27%	19%	25%	N/A	N/A	N/A
Discharging arrivals	Arrivals	296	300	311	405	1312	328	52
Unique discharging vessels*	Discharging arrivals	203*	209*	200*	287*	899*	225*	42*
Utilized BWMS	Discharging arrivals	256	267	287	388	1198	300	60
Discharge volumes (MMT)	Discharging arrivals	4.4	3.4	3.5	5.5	17	4	1
Vessel Inspections	Inspected arrivals	51	73	63	67	254	64	9
Percent boarded vessels (WDFW only)	Arrivals	6%	7%	6%	7%	N/A	N/A	N/A
	Discharging arrivals	17%	24%	20%	17%	N/A	N/A	N/A

\*Calculated from entire year rather than as sum of quarter values to account for repeat visits between quarters.

# Ballast Water Quarterly Report



Washington  
Department of  
**FISH &  
WILDLIFE**

Data source		2023						
		First	Second	Third	Fourth	Total	Avg	Stdev
Total arrivals	Arrivals	792	986	1010	975	3763	941	100
Noncompliant arrivals	Arrivals	25%	27%	19%	25%	N/A	N/A	N/A
Discharging arrivals	Arrivals	296	300	311	405	1312	328	52
Unique discharging vessels*	Discharging arrivals	203*	209*	200*	287*	899*	225*	42*
Utilized BWMS	Discharging arrivals	256	267	287	388	1198	300	60
Discharge volumes (MMT)	Discharging arrivals	4.4	3.4	3.5	5.5	17	4	1
Vessel Inspections	Inspected arrivals	51	73	63	67	254	64	9
Percent boarded vessels (WDFW only)	Arrivals	6%	7%	6%	7%	N/A	N/A	N/A
	Discharging arrivals	17%	24%	20%	17%	N/A	N/A	N/A

\*Calculated from entire year rather than as sum of quarter values to account for repeat visits between quarters.

# Ballast Water Quarterly Report



Washington  
Department of  
**FISH &  
WILDLIFE**

Data source		2023						
		First	Second	Third	Fourth	Total	Avg	Stdev
Total arrivals	Arrivals	792	986	1010	975	3763	941	100
Noncompliant arrivals	Arrivals	25%	27%	19%	25%	N/A	N/A	N/A
Discharging arrivals	Arrivals	296	300	311	405	1312	328	52
Unique discharging vessels*	Discharging arrivals	203*	209*	200*	287*	899*	225*	42*
Utilized BWMS	Discharging arrivals	256	267	287	388	1198	300	60
Discharge volumes (MMT)	Discharging arrivals	4.4	3.4	3.5	5.5	17	4	1
Vessel Inspections	Inspected arrivals	51	73	63	67	254	64	9
Percent boarded vessels (WDFW only)	Arrivals	6%	7%	6%	7%	N/A	N/A	N/A
	Discharging arrivals	17%	24%	20%	17%	N/A	N/A	N/A

\*Calculated from entire year rather than as sum of quarter values to account for repeat visits between quarters.

# Ballast Water Quarterly Report

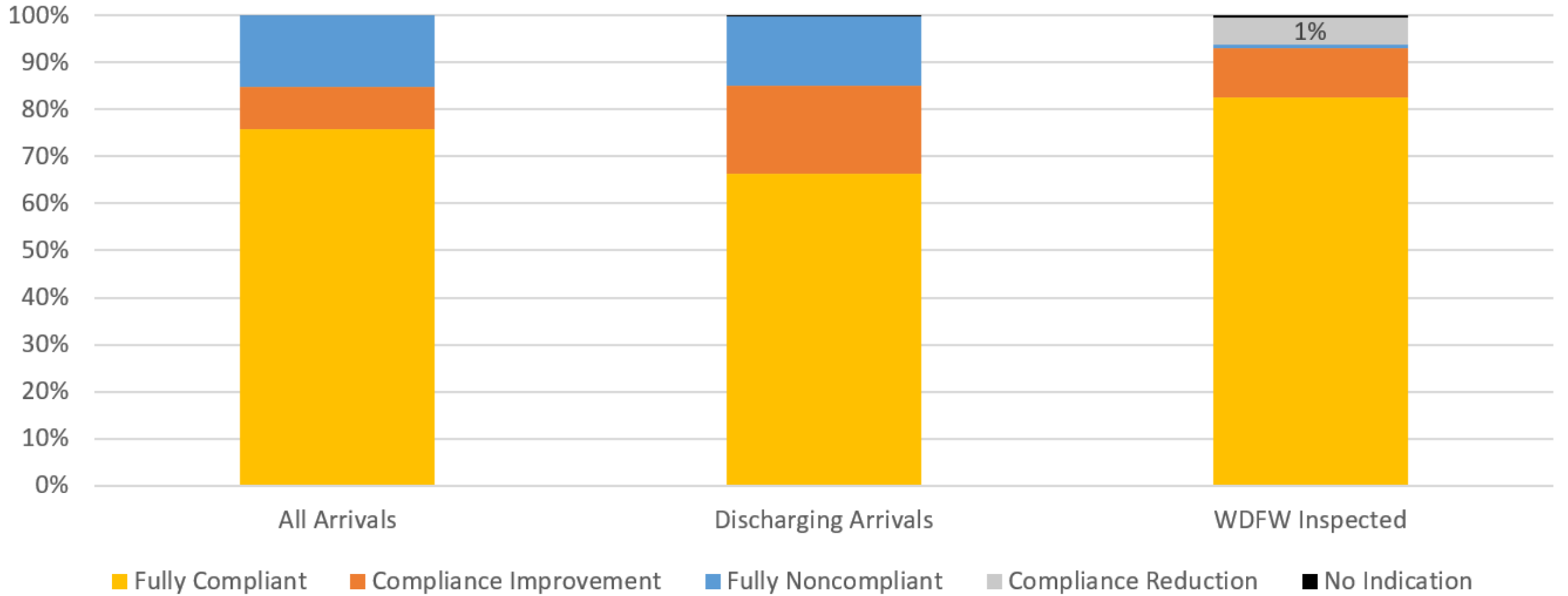


Washington  
Department of  
**FISH &  
WILDLIFE**

Data source		2023						
		First	Second	Third	Fourth	Total	Avg	Stdev
Total arrivals	Arrivals	792	986	1010	975	3763	941	100
Noncompliant arrivals	Arrivals	25%	27%	19%	25%	N/A	N/A	N/A
Discharging arrivals	Arrivals	296	300	311	405	1312	328	52
Unique discharging vessels*	Discharging arrivals	203*	209*	200*	287*	899*	225*	42*
Utilized BWMS	Discharging arrivals	256	267	287	388	1198	300	60
Discharge volumes (MMT)	Discharging arrivals	4.4	3.4	3.5	5.5	17	4	1
Vessel Inspections	Inspected arrivals	51	73	63	67	254	64	9
Percent boarded vessels (WDFW only)	Arrivals	6%	7%	6%	7%	N/A	N/A	N/A
	Discharging arrivals	17%	24%	20%	17%	N/A	N/A	N/A

\*Calculated from entire year rather than as sum of quarter values to account for repeat visits between quarters.

# Ballast Water Management Compliance 2024





# Ballast Water Quarterly Report



Data source		2023						
		First	Second	Third	Fourth	Total	Avg	Stdev
Total arrivals	Arrivals	792	986	1010	975	3763	941	100
Noncompliant arrivals	Arrivals	25%	27%	19%	25%	N/A	N/A	N/A
Discharging arrivals	Arrivals	296	300	311	405	1312	328	52
Unique discharging vessels*	Discharging arrivals	203*	209*	200*	287*	899*	225*	42*
Utilized BWMS	Discharging arrivals	256	267	287	388	1198	300	60
Discharge volumes (MMT)	Discharging arrivals	4.4	3.4	3.5	5.5	17	4	1
Vessel Inspections	Inspected arrivals	51	73	63	67	254	64	9
Percent boarded vessels (WDFW only)	Arrivals	6%	7%	6%	7%	N/A	N/A	N/A
	Discharging arrivals	17%	24%	20%	17%	N/A	N/A	N/A

\*Calculated from entire year rather than as sum of quarter values to account for repeat visits between quarters.

## In 2023:

- 3763 regulated vessels arrived to ports in Washington State
- 1312 vessels discharged a total of 17 million metric tons of ballast water into Washington waters
- The Ballast Water and Biofouling Section met or exceeded the legislative mandate to board and inspect 6% of regulated vessel arrivals.

## Background:

The Ballast Water and Biofouling Section administers and tracks compliance with state ballast water management regulations. Ballast water is essential to safe operation of vessels that carry cargo between ports around the world. Unless properly managed, ballast water can spread aquatic invasive species, which cause harm to economies, environments, and human health. These quarterly reports contain data from required ballast water reporting forms.



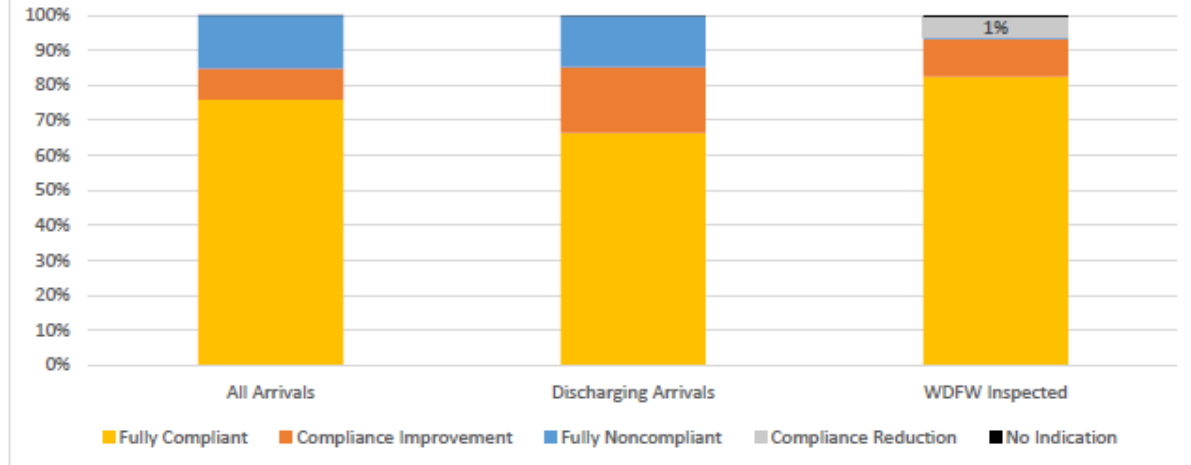
For more information on the management of vessels for prevention of marine invasive species and the activities of the Ballast Water and Biofouling Section, please visit:

[wdfw.wa.gov/species-habitats/invasive/ballast-water](https://wdfw.wa.gov/species-habitats/invasive/ballast-water)

The Washington Department of Fish and Wildlife Ballast Water and Biofouling Section is responsible for implementing state ballast water laws under Chapter 77.120 RCW and Chapter 220-650 WAC.

*Photo credit: A. Newsom, WDFW. Bulk vessel at TEMCO grain elevator.*

## Ballast Water Management Compliance 2024



Most vessels were in compliance with state laws, and the percentage of compliant vessels arriving to state waters was increased by interaction with the Ballast Water and Biofouling Section. Section staff fielded over 4000 ballast water management reports and report amendments in 2024, and assisted vessels in addressing compliance problems. Over 70% of All Arrivals were fully compliant upon entry into state waters, and compliance for this group improved to over 80% once section staff were able to review the ballast water reporting form and provide technical assistance. Approximately 65% of vessel arrivals in which ballast water was discharged (Discharging Arrivals) were compliant when entering state waters, and Section staff were able to increase compliance for this group to over 80%. The 1% compliance reduction for vessels boarded by WDFW ballast water inspectors (WDFW Inspected) represents compliance problems that were revealed over the course of an inspection that would not otherwise have been accounted for on the submitted ballast water management report.

The Ballast Water and Biofouling Section communicates daily with vessel crews and agents. Section staff provide technical assistance, review ballast management documentation, and assist vessels in correcting compliance issues as part of the Agency's effort to improve ballast water management and protect Washington waters.

### Section Business Contact:

Ballast Water and Biofouling Section Lead  
Amanda Newsom, PhD  
[Amanda.Newsom@dfw.wa.gov](mailto:Amanda.Newsom@dfw.wa.gov)

### Reporting Contact:

Ballast Water and Biofouling Section Data Manager  
Grace Thornton  
[Grace.Thornton@dfw.wa.gov](mailto:Grace.Thornton@dfw.wa.gov)



# Outreach

---



# Audiences



THE PUBLIC



INDUSTRY



SCIENTISTS and  
MANAGERS



Focus on the Public

WDFW Oct. 2024 Blog Spotlight

# Ballast water management protects Washington from aquatic invasive species



The Washington Department of Fish and Wildlife · [Follow](#)

5 min read · Oct 17, 2023

# Focus on Industry

## Ballast Water Program Brochure

*Compliance is required by law*  
Chapter 77.120 RCW | Chapter 220.650 WAC

Washington state  
**Ballast water reporting  
and inspections**



- Environmental protection and ballast water management
- Authorities and required documentation
- Required operations to reduce the risk of invasive species release
- What to expect during an inspection



Washington Department of  
FISH & WILDLIFE

Washington Dept. of Fish and Wildlife  
Ballast Water Management Program  
P.O. Box 43150  
Olympia, WA 98504-3150  
360-902-2189  
ballastwater@dfw.wa.gov



Scan for more  
information or  
visit: [wdfw.wa.gov/  
ballast](http://wdfw.wa.gov/ballast)

# Focus on Scientists and Managers

WDFW Oct. 2024 Blog Spotlight

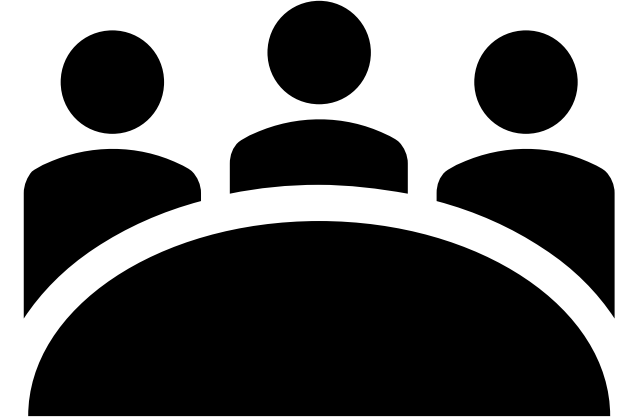
## PACDASH Pacific Data Sharing



---

# Washington Ballast Water Working Group

- WDFW considers inactive
- Reconvening as WDFW Advisory Group
- Representation invited by Director's Office
  - Broad and equitable representation
  - May involve application process for specific group positions
  - Washington State focused
- Pursuant to RCW 77.120



*A collaborative forum with advisors from regulated industries and the potentially affected parties including shipping interests, ports, shellfish growers, fisheries, environmental interests, interested citizens who have knowledge of the issues, and appropriate governmental representatives including the United States coast guard and the United States environmental protection agency.*





Washington Department of  
**FISH & WILDLIFE**

Thank You!

[Amanda.Newsom@dfw.wa.gov](mailto:Amanda.Newsom@dfw.wa.gov) &  
[Justin.Bush@dfw.wa.gov](mailto:Justin.Bush@dfw.wa.gov)

---

[wdfw.wa.gov/species-habitats/invasive/  
ballast-water](http://wdfw.wa.gov/species-habitats/invasive/ballast-water)